



# Variety

Simply better.

Distributed by:

## High performance, all-steel bar clamps for industrial application

High performance bar clamps from BESSEY® represent the peak of the all-steel bar clamp category. Made in Germany, the high performance series delivers uncompromising quality, patented features, durability and real-world productivity to make it a must-have tool in today's modern workshop.

### 1 Patented rail profile

For greater stability, enhanced clamping force and 20% more clamping force per spindle turn for quicker set-up times (1800-S and 2400S series).

### 2 BESSEY® MorPad

Reduces friction at the point of contact, increasing and optimizing clamping force. BESSEY® product with the MorPad extends tool life and, at full clamping potential.

### 3 Hardened spindle

Heat-treated, high carbon Acme threaded spindle manufactured for high load capacity, durability and spatter resistance.

### 4 Size engineered T-Bar

Ergonomic, high-strength sliding pin T-Bar. BESSEY® Grip standard with 1800-S/2400S.

### 5 Drop forged sliding arm

U-shaped sliding arm transfers clamping force evenly across the surface of the forged piece improving power transmission and stability for a longer lasting tool.



### Regular duty, S series

- Can be set up an estimated 9X faster than a C-clamp.
- Includes patented rail profile, MorPad, ergonomic BESSEY® grip.

	Clamping Capacity	Throat Depth	Clamping Force	Price
1800-S8	8"	4 3/4"	1980 lbs	\$124.56
1800-S12	12"	4 3/4"	1980 lbs	\$128.00
1800-S24	24"	4 3/4"	1980 lbs	\$150.08
2400S-12	12"	5 1/2"	2800 lbs	\$165.38
2400S-20	20"	5 1/2"	2800 lbs	\$208.70
2400S-24	24"	5 1/2"	2800 lbs	\$231.48

FROM 124<sup>56</sup>



### Heavy duty 4800S series

- Nearly twice the clamp force capacity.
- Spindle with 19 mm hexagonal head to assist in tightening (torque of 70Nm or less).
- Includes standard rail profile, MorPad.

	Clamping Capacity	Throat Depth	Clamping Force	Price
4800S-12	12"	7"	4880 lbs	\$312.98
4800S-18	18"	7"	4880 lbs	\$349.90
4800S-24	24"	7"	4880 lbs	\$383.63

FROM 312<sup>98</sup>

## Induction bearing heater

### Portable digital temperature control, certified PVH3813

- Extend bearing life and cut operating cost by eliminating hammering and pounding to cold-mount bearings. Works on bearings, sprockets, gears, couplings & sleeves.
- Digital time/temperature display & magnetic probe.
- Vertical or Horizontal heating.
- Includes cross bars standard: 1/4", 3/8", 9/16", 1/2", 1 1/8".
- Approx. weight: 51 lbs.



4601<sup>17</sup>

\*Bearings not included



	Max. weight ± lb bearings	Min. ID Ø	Max. OD Ø	Price
PVH3813	110 lbs	3/8" Ø 3 7/8"	15"	\$4601.17

### Newsletter & Offers...

Sign up for news & exclusive offers from BESSEY® by emailing your request to [info@besseytools.com](mailto:info@besseytools.com)

- Join us on...
- facebook.com/BesseyToolsNorthAmerica
  - instagram.com/besseytools\_na/
  - twitter.com/BesseyTools
  - youtube.com/user/BesseyTools
  - besseytools.com





# Induction bearing heater, SC 110V

- Extend bearing life and cut operating cost by eliminating hammering and pounding to cold-mount bearings.
- Works on bearings, sprockets, gears, couplings and sleeves.
- Demagnetizes bearings – easy to use, ready in minutes.
- Single phase 60 hz units. 50 hz versions available as special request.
- Bearing capacity: 4" x 11" O.D. (14" OD with optional raising blocks).

2180<sup>50</sup>



	Voltage	Standard Cross Bars	Optional Cross Bars	Price
SC 110V	120V (17 amp)	¾, 2	1 ¼	\$2180.50

\*Bearings not included



186<sup>19</sup>

# Shop floor all-steel step-over bar clamps

## Regular duty step-over clamps with pad, 2400J series

- Return rail lets the J clamps “step-over” the lip on channel iron, angle-iron, I-Beam or other obstructions.
- BESSEY® MorPad reduces friction at the point of contact, increasing and optimizing clamping force. MorPad tilts to 35°.
- Forged sliding arm made from tempered, drop-forged steel.
- Ergonomic grip is standard.



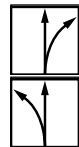
	Clamping Capacity	Throat Depth	Clamping Force	Rail Step-Over Up to	Price
2400J-12	12"	5 ½"	2660 lbs	4"	\$186.19



# Offset snips, optimized, D29ASS-2

45<sup>92</sup>

- High grade steel cutting blades with compact cutting head for high manoeuvrability.
- Right or left cutting versions available. HRC up to 61.



	Overall Length	Blade Length	Cutting Capacity (carbon steel)	Price
D29ASS-2	10 ¼"	1 ⅞"	18 gauge	\$45.92
D29ASSL-2	10 ¼"	1 ⅞"	18 gauge	\$45.92



# Long-nose multi-purpose snip, D22A

38<sup>24</sup>

- High grade steel, extra long cutting blades designed for continuous cuts and large radius cuts.
- Available in left cutting version only. HRC up to 59.



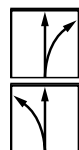
	Overall Length	Blade Length	Cutting Capacity (carbon steel)	Price
D22A	10 ½"	2 ½"	18 gauge	\$38.24



# Special hard cutting snips, D29SS-2

30<sup>11</sup>

- High grade steel cutting blades with micro-serrations for slip proof cutting.
- Right or left cutting versions available. HRC up to 61.



	Overall Length	Blade Length	Cutting Capacity (carbon steel)	Price
D29SS-2	10 ⅞"	1 ⅞"	18 gauge	\$30.11
D29SSL-2	10 ⅞"	1 ⅞"	18 gauge	\$30.11





# One-handed edge clamp, EKT

- Unique twin spindle: Outer spindle acts on the clamping jaws – inner spindle applies pressure to the front edge.
- Impact resistant plastic handle for one-handed use.
- Two large non-slip, opposing, gentle jaws for positive grip.
- Large swivel pressure plate
- Removable protective cap.
- Lightweight, corrosion-resistant aluminum housing for high static stress load

69<sup>54</sup>



	Clamping Capacity	Throat Depth	Clamping Force	Price
EKT-55	2 1/8"	3"	500 lbs	\$69.54

# KliKlamp® light duty lever clamp



- Light as a feather – tough as nails – perfect for your workshop.
- Sturdy magnesium surface-coated fixed and sliding arms – lightweight and strong.
- Multi-stage ratchet mechanism is easy to operate, vibration-resistant, and can be released quickly.
- Fixed arm with crossed v-grooves holds round, pointed or angular components firmly.

FROM 28<sup>58</sup>



	Clamping Capacity	Throat Depth	Clamping Force	Price
KLI3.008	8"	3"	260 lbs	\$28.58
KLI3.012	12"	3"	260 lbs	\$31.36



# Seaming tool, PS55

256<sup>50</sup>

- Precision, professional tool.
- Twin vacuum cups secure PS to any smooth, non-porous material or solid surface.
- Levelling toggles ensure smooth surface joint, reduce grinding, sanding and finishing.
- Large diameter Acme type lead screw; guide rails for support.
- Ergonomic wooden handle.

	Clamping Capacity	Cup Diameter	Clamping Force	Price
PS55	2 1/8"	4 3/4"	48 lbs	\$256.50



# All-steel, rapid-action lever bar clamps

FROM 78<sup>64</sup>

- Quick – up to 5 times faster than regular clamps!
- Patented rail profile
- Secure, unaffected by vibrations
- Strong – high clamping force
- Secure ratchet mechanism
- Forged sliding arm
- Non-slip trigger release
- Extremely sturdy
- Ergonomic handle

	Clamping Capacity	Throat Depth	Clamping Force	Price
LC4	4"	2 3/8"	400 lbs	\$78.64
LC8	8"	4"	660 lbs	\$91.49
LC12	12"	5 1/2"	1200 lbs	\$125.20
LC20	20"	4 3/4"	1200 lbs	\$138.03
LC31	31"	4 3/4"	1200 lbs	\$158.74





# Variety

Simply better.

Distributed by:

## Woodworking cast bar clamps

The original BESSEY® bar clamp with modern BESSEY® 2K handle. The high quality 2K composite handle with comfort insert allows you to complete tasks more effectively and with less hand fatigue.

### 1 Integrated anti-slip system

Maximum safety with the integrated anti-slip system. A set screw is molded into the sliding arm and interlocks with the serration on the rail.

### 2 Reinforced jaw and sliding arm

Corrugated malleable cast iron fixed jaw and sliding arm generate powerful, rigid clamping.

### 3 High quality profiled rail

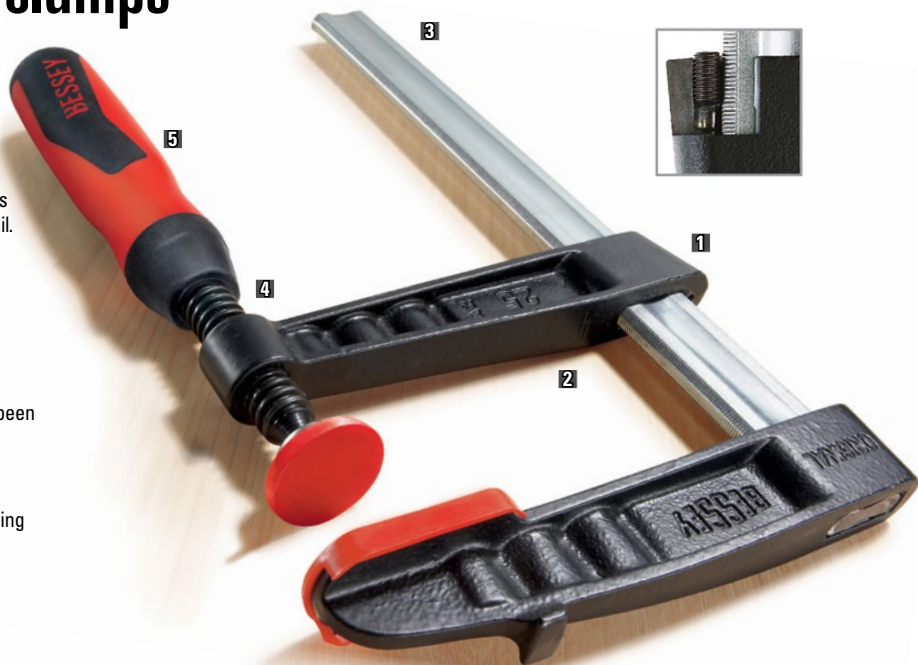
The BESSEY® profiled rail from our own German steel plant has been optimized for clamps. The profile acts against torsional forces.

### 4 BESSEY® smooth running spindle

Smooth running spindle with Acme thread allows for more clamping with less effort. Replaceable pressure plates.

### 5 BESSEY® comfort handle

2K composite handle with comfort insert.



### Light duty TG & TGJ, with 2K handle

- The rail's hourglass profile helps TG to resist flex.
- A tough tool built with the quality you expect from BESSEY®.

	Clamping Capacity	Throat Depth	Clamping Force	Price
TGJ2.506+2K	6"	2 1/2"	600 lbs	\$20.69
TGJ2.512+2k	12"	2 1/2"	600 lbs	\$22.26
TGJ2.524+2k	24"	2 1/2"	600 lbs	\$26.92
TG4.008+2k	8"	4"	880 lbs	\$31.07
TG4.012+2k	12"	4"	880 lbs	\$37.64
TG4.024+2k	24"	4"	880 lbs	\$50.99

FROM 20<sup>69</sup>



### Medium duty, TG, with 2K handle

- Load up on pressure, durability & versatility.
- 6 serrated edges withstand a lot of pressure without slipping.

	Clamping Capacity	Throat Depth	Clamping Force	Price
TG5.512+2k	12"	5 1/2"	1320 lbs	\$49.19
TG5.524+2k	24"	5 1/2"	1320 lbs	\$64.18
TG7.016+2k	16"	7"	1320 lbs	\$59.23
TG7.024+2k	24"	7"	1320 lbs	\$69.48

FROM 49<sup>19</sup>



128<sup>39</sup>

## Panel carrier, KF

- Safely transport panels with the BESSEY® panel carrier.
- Jaws with high-friction rubber coating can withstand up to 150 lbs of carrying weight.



	Opening	Price
KFP	1/2" - 2 1/2"	\$128.39

### Newsletter & Offers...

Sign up for news & exclusive offers from BESSEY® by emailing your request to [info@besseytools.com](mailto:info@besseytools.com)

### Join us on...

- facebook.com/BesseyToolsNorthAmerica
- instagram.com/besseytools\_na/
- twitter.com/BesseyTools
- youtube.com/user/BesseyTools
- besseytools.com

