

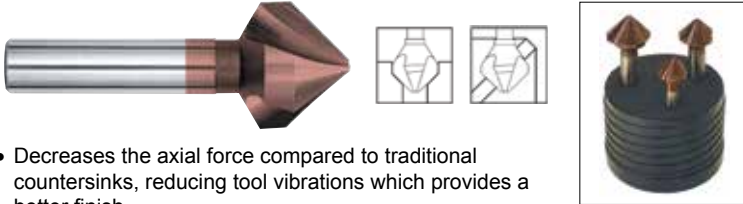
WINTER WARM UP SALE

NEW

Anti-Vibration Countersinks



3 Flute – 90° Angle – HSS-E Cobalt with Red'X Coating



- Decreases the axial force compared to traditional countersinks, reducing tool vibrations which provides a better finish
- DIN 335-C
- The equal division 3 x 120° of the flutes offer good results in most materials



3 piece sets

D Overall Diameter (mm)	d Shank Diameter (mm)	Chamfer Range Min/Max (mm)	L Overall Length (mm)	90° Angle Series 493-A Red'X	
				Code	Price
4.3	4	1.3-4.3	40	541160	\$ 33.19
5.3	4	1.5-5.3	40	541161	34.33
6.0	5	1.5-6.0	45	541162	35.47
6.3	5	1.5-6.3	45	541163	35.47
8.0	6	2.0-8.0	50	541164	36.61
8.3	6	2.0-8.3	50	541165	36.61
9.4	6	2.2-9.4	50	541166	37.98
10.0	6	2.5-10.0	50	541167	38.68
10.4	6	2.5-10.4	50	541168	38.68
11.5	8	2.8-11.5	56	541169	43.48
12.0	8	2.8-12.0	56	541170	46.93
12.4	8	2.8-12.4	56	541171	46.93
15.0	10	3.2-15.0	60	541172	54.94
16.5	10	3.2-16.5	60	541173	59.06
20.5	10	3.5-20.5	63	541174	67.51
25.0	10	3.8-25.0	67	541175	91.55
28.0	12	4.0-28.0	71	541176	120.18
30.0	12	4.2-30.0	71	541177	124.74
31.0	12	4.2-31.0	71	541178	127.05
3-PC. SET 493A/98	– Ø 8.3mm, 12.4mm, 20.5mm			541179	135.95
3-PC. SET 493A/99	– Ø 10.4mm, 16.5mm, 25mm			541180	171.67

NEW

Tapping Fluid XTRA-THICK - 16 oz.



- Extreme performance for hard metals – inconel, titanium, stainless... any metal up to 45 HRC
- Virtually eliminates work hardening
- Clinging action means it stays with the tool for deep cuts on heavy gage materials and for lathe and mill work – not prone to slinging off

\$15.30
Code 219238

NEW

Engineer's Black Book

3rd Edition

60 pages of **NEW** content



- Pocket size machinist reference book with 234 pages
- Laminated non-glare pages are tear and grease proof
- Non-slip rubberized cover
- Wired lay flat binding

\$54.40
Code 284998

Includes self adhesive Bookmarking Tabs



Pipe Taps High Speed Steel



- Straight flute
- For cast iron and steel applications
- NPT and NPTF standards



Size (Inch)	Threads per Inch	No. of Flutes	Overall Length (Inch)	Thread Length (Inch)	Code	Price
1/16	27	4	2-1/8	0.688	915700	\$ 16.22
1/8	27	4	2-1/8	0.750	915701	17.74
1/4	18	4	2-7/16	1.063	915702	19.32
3/8	18	4	2-9/16	1.063	915703	24.57
1/2	14	4	3-1/8	1.375	915704	27.43
3/4	14	5	3-1/4	1.375	915705	43.10
1	11-1/2	5	3-3/4	1.750	915706	67.49
1-1/4	11-1/2	5	4	1.750	915707	106.02
1-1/2	11-1/2	7	4-1/4	1.750	915708	161.45
2	11-1/2	7	4-1/2	1.750	915709	264.48

YOUR AUTHORIZED KAR DISTRIBUTOR:

Yellow Colour Band Taps

Spiral Point Plug & Spiral Flute Bottoming Styles



Cutting Conditions

Material	Material Sub-Group	Condition	Hardness (HRC)	Cutting Speed (FPM)
Stainless Steel	200 Series	annealed	<28	20-35
	300 Series		<28	20-35
	17-4, 15-5		<25	15-25
	AM286		<25	15-25
	400 Series		<29	20-35
Tool Steel	01, A-2, D-2, H-13, P-20	annealed	<35	15-25
Medium Carbon Steel	1030, 1035, 1038, 1040, 1045, 1050	normalized	<28	20-40
Alloyed High Carbon Steel	1065, 1070, 1080, 1090, 1095, 1561, 1572	normalized	<32	20-30
High Strength Steel	4140, 4340	normalized	<32	20-30
Titanium	commercially pure	annealed	<32	15-30
Aluminum	cast, wrought		-	30-90

Inch Sizes

Size	Spiral Point						Spiral Flute					
	Overall Length (Inch)	No. of Flutes	Thread Length (Inch)	Thread Limit	Code	Price	Overall Length (Inch)	No. of Flutes	Thread Length (Inch)	Thread Limit	Code	Price
4-40	1-7/8	2	0.335	GH2	915060	\$ 7.98	1-7/8	2	0.236	GH2	915000	\$ 12.48
6-32	2	3	0.413	GH3	915062	8.40	2	3	0.276	GH2	915002	11.75
8-32	2-1/8	3	0.453	GH3	915066	8.40	2-1/8	3	0.276	GH2	915004	14.63
10-32	2-3/8	3	0.531	GH3	915070	8.40	2-3/8	3	0.276	GH3	915008	14.37
1/4-20	2-1/2	3	0.591	GH3	915074	9.74	2-1/2	3	0.433	GH3	915010	14.63
5/16-18	2-23/32	3	0.669	GH3	915078	12.17	2-23/32	3	0.472	GH3	915014	18.60
3/8-16	2-15/16	3	0.748	GH3	915082	12.10	2-15/16	3	0.551	GH3	915018	22.41
1/2-13	3-3/8	3	0.984	GH3	915090	22.41	3-3/8	3	0.630	GH3	915024	36.74
5/8-11	3-13/16	3	1.083	GH3	915094	41.37	3-13/16	4	0.478	GH3	915028	40.25
3/4-10	4-1/4	3	1.201	GH3	915098	61.62	4-1/4	4	0.827	GH3	915032	62.94

Metric Sizes

Size & Pitch	Spiral Point						Spiral Flute					
	Overall Length (Inch)	No. of Flutes	Thread Length (Inch)	Thread Limit	Code	Price	Overall Length (Inch)	No. of Flutes	Thread Length (Inch)	Thread Limit	Code	Price
M2 x 0.4	1-15/16	2	0.375	D3	915357	\$ 18.30	-	-	-	-	-	-
M3 x 0.5	1-15/16	2	0.375	D3	915361	13.44	1-15/16	3	0.197	D3	915301	\$ 16.80
M4 x 0.7	2-1/8	2	0.375	D4	915365	9.74	2-1/8	3	0.276	D4	915305	16.80
M5 x 0.8	2-3/8	2	0.500	D4	915369	11.18	2-3/8	3	0.354	D4	915307	16.80
M6 x 1	2-1/2	2	0.625	D5	915371	11.18	2-1/2	3	0.433	D5	915309	16.80
M7 x 1	2-23/32	3	0.687	D5	915373	14.28	2-23/32	3	0.433	D5	915311	25.84
M8 x 1.25	2-23/32	3	0.687	D5	915375	14.28	2-23/32	3	0.472	D5	915313	25.84
M10 x 1.5	2-15/16	3	0.750	D6	915379	17.02	2-15/16	3	0.512	D6	915317	38.64
M12 x 1.75	3-3/8	3	0.937	D6	915383	25.81	3-3/8	3	0.591	D6	915321	42.26

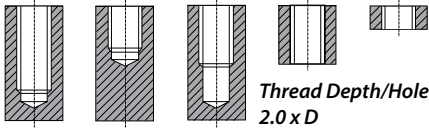
**COMPLETE LINE OF
YELLOW, BLUE & RED
COLOUR BAND TAPS
AVAILABLE AT KAR!**



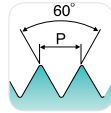
**CHECK OUT
WWW.KAR.CA
FOR FULL DETAILS!**

Hand Taps – Premium

Metric – Taper, Plug & Bottoming Style



Thread Depth/Hole Type
2.0 x D



HSS
M MF
USCTI 302
9P/5P/2P
Bright

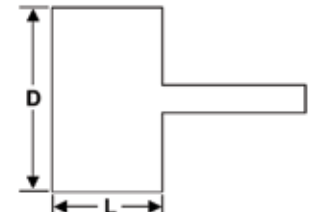


Size & Pitch	Thread Limit	Overall Length (Inch)	Thread Length (Inch)	Taper Style Code	Plug Style Code	Bottoming Style Code	Price
M1.6 x 0.35	D3	1.63	0.310	-	915817	-	\$ 15.40
M2 x 0.40	D3	1.75	0.440	-	915818	915847	15.40
M2.5 x 0.45	D3	1.81	0.500	-	915819	915848	9.30
M3 x 0.50	D3	1.94	0.630	915800	915820	915849	9.42
M3.5 x 0.60	D4	2.00	0.690	-	915821	915850	7.64
M4 x 0.70	D4	2.13	0.750	915801	915822	915851	7.64
M4.5 x 0.75	D4	2.38	0.880	-	915823	915852	7.64
M5 x 0.80	D4	2.38	0.880	915802	915824	915853	7.82
M6 x 1.00	D5	2.50	1.000	915803	915825	915854	8.28
M7 x 1.00	D5	2.72	1.130	-	915826	915855	9.02
M8 x 1.25	D5	2.72	1.130	915804	915827	915856	9.02
M8 x 1.00	D5	2.72	1.130	-	915828	915857	9.02
M10 x 1.00	D5	2.94	1.250	-	915829	915858	12.12
M10 x 1.50	D6	2.94	1.250	915805	915830	915859	12.12
M10 x 1.25	D5	2.94	1.250	915806	915831	915860	11.36
M12 x 1.50	D6	3.38	1.660	-	915832	915861	18.74
M12 x 1.75	D6	3.38	1.660	915807	915833	915862	18.74
M12 x 1.25	D5	3.38	1.660	915808	915834	915863	18.74
M14 x 2.00	D7	3.59	1.660	915809	915835	915864	27.88
M14 x 1.50	D6	3.59	1.660	-	915836	915865	27.88
M14 x 1.25	D5	3.59	1.660	-	915837	915866	27.88
M16 x 2.00	D7	3.81	1.810	915810	915838	915867	34.10
M16 x 1.50	D6	3.81	1.810	915811	915839	915868	34.10
M18 x 2.50	D7	4.03	1.810	-	915840	915869	45.76
M18 x 1.50	D6	4.03	1.810	915812	915841	915870	45.76
M20 x 2.50	D7	4.47	2.000	915813	915842	915871	56.58
M20 x 1.50	D6	4.47	2.000	915814	915843	915872	56.58
M24 x 3.00	D8	4.91	2.220	915815	915844	915873	86.76
M30 x 3.50	D9	5.44	2.560	915816	915845	915874	179.72
M36 x 4.00	D9	6.06	3.000	-	915846	915875	215.42

Mounted Flap Wheels

1/4" Shank

Size D x L (Inch)	Grit	RPM	Code	Price	Size D x L (Inch)	Grit	RPM	Code	Price		
3/4 x 3/4	40	-	705180	\$5.00/ea.	1-1/2 x 1	40	18,000	705260	\$5.50/ea.		
	60	-	705181			60	18,000	705261			
	80	-	705182			80	18,000	705262			
	120	-	705183			120	18,000	705263			
	150	-	705184			150	18,000	705264			
	180	-	705185			180	18,000	705265			
	240	-	705186			240	18,000	705266			
1 x 1	320	-	705187	320	18,000	705267	2 x 1	40	17,000	705310	\$6.75/ea.
	40	-	705190	40	17,000	705311					
	60	-	705191	60	17,000	705312					
	80	-	705192	80	17,000	705313					
	120	-	705193	120	17,000	705314					
	150	-	705194	150	17,000	705315					
	180	-	705195	180	17,000	705316					
240	-	705196	240	17,000	705317						
320	-	705197	320	17,000	705317						



More sizes available... Check out WWW.KAR.CA for more details

Mango II Set M

SHAVIV
Leading Deburring Solutions

B & E Blades

- Deburrs holes, slots and edges
- Mango II handle provides maximum comfort
- Holder M supports both B and E blades
- Deburrs steel, aluminum, copper, brass, cast iron, stainless steel, and plastics



\$24.15



Straight Edge



Hole Edge



Cross-Hole Both Edges

Code 550605

Uniburrs

SHAVIV
Leading Deburring Solutions



Straight Edge Hole Edge

- Popular, slim-grip deburring tools
- Strong, yet lightweight
- Features convenient pocket clip
- Deburrs steel, aluminum, copper and plastics



UB2000

B10 blade inserted axially or perpendicular to handle

\$11.90

Code 550883



MB2000

Strong hexagon-shaped handle. E100 blade

\$10.75

Code 550882

100mm Face Mill + 10 SEKT Inserts

574262

KCT

FMA01 100-B1.25"-SE12-07 FACE MILL:

- Lead angle: 45°
- Cutting diameter: 100mm
- 1-1/4" arbor
- 7 pockets

577597

I/G

SEKT 12T3AGTN INSERT:

- Grade YG602

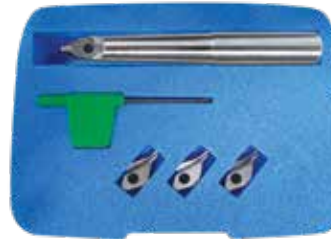
\$389.00

Code

PROMO10

Indexable Combined Drill & Countersink Sets

Carbide Inserts



- Secure insert pocket allows for quick and repeatable indexes
- Easy change over from one size to another – same body holds #2, #3, #4 and #5 inserts
- Carbide inserts for extended tool life – one grade handles all applications
- Multiple bodies available for the same indexable insert (5/16", 3/8", 1/2", 5/8", 3/4", 1", and 1-1/4")
- Convenient, low-cost and economical

Set contains 1 holder, 4 carbide inserts - #2, #3, #4, and #5, and 1 Torx® 9 key

\$159.99/ea.

5/8" x 5" Holder Code 530671

1/2" x 4" Holder Code 530672

Precision Milling Machine Vise

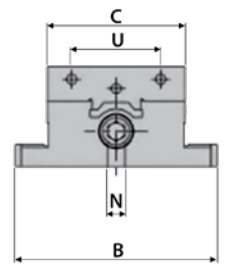
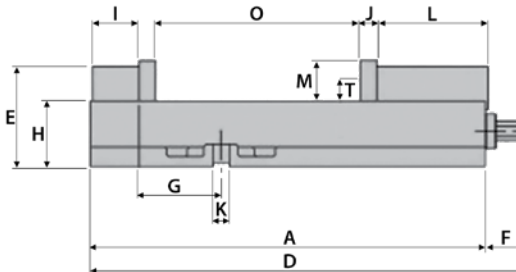
FCD-60 Ductile Iron

6" x 7.5" Opening



\$481.73

Code 277064



Bed Height from Machine Table

2.875" ±0.0005"

Parallelism of Vise Base to Vise Bed

0.0006"

Vertical of Fixed Jaw to Vise Bed

0.0005"

Clamping Force (lbs)

6,700

A (Inch)	B (Inch)	C (Inch)	D (Inch)	E (Inch)	F (Inch)	G (Inch)	H (Inch)	I (Inch)	J (Inch)	K (Inch)	L (Inch)	M (Inch)	N (Inch)	Weight (lbs)
17.01	4.63	9.25	6	2.05	18.74	3.87	2.87	1.50	1.75	4.84	0.69	7.5	0.71	79



Tool Holder Bushings

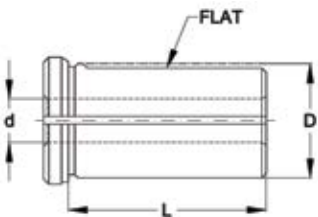
CNC Bushings – Black Oxide Finish – Types B & C

- For use on all NC and CNC turning machines to adapt a wide variety of boring bars, drills, reamers and other round shank type tools
- Heat treated and precision ground

Type B



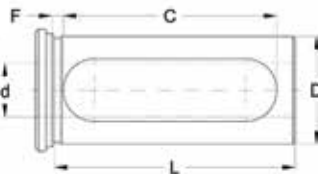
- B bushings have splits and flats providing strong gripping of the tool shanks



Type C



- C bushings have long slots for clamping directly on the tool for positive alignment of the cutting edge of the tool



D Outside Diameter (Inch)	d Inside Diameter (Inch)	Type B		Type C			Price
		L Length Under Head (Inch)	Code	L Length Under Head (Inch)	C Slot Length (Inch)	F (Inch)	
3/4	3/8	–	–	2	1-1/2	0.1693	310732
3/4	1/2	–	–	2	1-1/2	0.1693	310733
1	3/8	–	–	2-3/4	2-3/8	0.1319	310534
1	1/2	1-3/4	310832	2-3/4	2-3/8	0.1319	310536
1	5/8	1-3/4	310833	2-3/4	2-3/8	0.1319	310538
1	3/4	1-3/4	310834	2-3/4	2-3/8	0.1319	310540
1-1/4	3/8	2-1/8	310700	3-1/4	2-3/4	0.1496	310544
1-1/4	1/2	2-1/8	310835	3-1/4	2-3/4	0.1496	310545
1-1/4	5/8	2-1/8	310701	3-1/4	2-3/4	0.1496	310547
1-1/4	3/4	2-1/8	310836	3-1/4	2-3/4	0.1496	310549
1-1/4	7/8	2-1/8	310702	3-1/4	2-3/4	0.1496	310734
1-1/4	1	2-1/8	310837	3-1/4	2-3/4	0.1496	310553
1-1/2	3/8	2-1/2	310703	3-3/8	3	0.1260	310735
1-1/2	1/2	2-1/2	310838	3-3/8	3	0.1260	310559
1-1/2	5/8	2-1/2	310704	3-3/8	3	0.1260	310561
1-1/2	3/4	2-1/2	310839	3-3/8	3	0.1260	310563
1-1/2	7/8	2-1/2	310705	3-3/8	3	0.1260	310736
1-1/2	1	2-1/2	310840	3-3/8	3	0.1260	310567
1-1/2	1-1/4	2-1/2	310706	3-3/8	3	0.1260	310571
1-3/4	1/2	3	310707	3-1/2	3-1/8	0.1260	310575
1-3/4	5/8	3	310708	3-1/2	3-1/8	0.1260	310577
1-3/4	3/4	3	310709	3-1/2	3-1/8	0.1260	310579
1-3/4	7/8	3	310710	3-1/2	3-1/8	0.1260	310737
1-3/4	1	3	310711	3-1/2	3-1/8	0.1260	310583
1-3/4	1-1/4	3	310712	3-1/2	3-1/8	0.1260	310587
1-3/4	1-1/2	3	310713	3-1/2	3-1/8	0.1260	310591
2	1/2	3-1/2	310714	4	3-5/8	0.1319	310595
2	5/8	3-1/2	310715	4	3-5/8	0.1319	310596
2	3/4	3-1/2	310716	4	3-5/8	0.1319	310597
2	7/8	3-1/2	310717	4	3-5/8	0.1319	310738
2	1	3-1/2	310718	4	3-5/8	0.1319	310599
2	1-1/4	3-1/2	310719	4	3-5/8	0.1319	310601
2	1-1/2	3-1/2	310720	4	3-5/8	0.1319	310603
2	1-3/4	3-1/2	310721	4	3-5/8	0.1319	310605
2-1/2	1/2	4	310722	4-1/2	4-1/8	0.1457	310739
2-1/2	5/8	4	310723	4-1/2	4-1/8	0.1457	310740
2-1/2	3/4	4	310724	4-1/2	4-1/8	0.1457	310741
2-1/2	7/8	4	310725	4-1/2	4-1/8	0.1457	310742
2-1/2	1	4	310726	4-1/2	4-1/8	0.1457	310743
2-1/2	1-1/4	4	310727	4-1/2	4-1/8	0.1457	310744
2-1/2	1-1/2	4	310728	4-1/2	4-1/8	0.1457	310745
2-1/2	1-3/4	4	310729	4-1/2	4-1/8	0.1457	310746
2-1/2	2	4	310730	4-1/2	4-1/8	0.1457	310747
2-1/2	2-1/4	4	310731	4-1/2	4-1/8	0.1457	310748

\$48.29/ea.

\$52.72/ea.

\$58.00/ea.

\$70.15/ea.

\$87.80/ea.

Oil Cans Pump Style



- Compact and robust
- Metal body with brass pump
- Supplied with rigid and flex spouts

\$10.17
300 ml
Code 416300

\$10.84
500 ml
Code 416301

\$13.54
700 ml
Code 416302

Automatic Drill Drifts



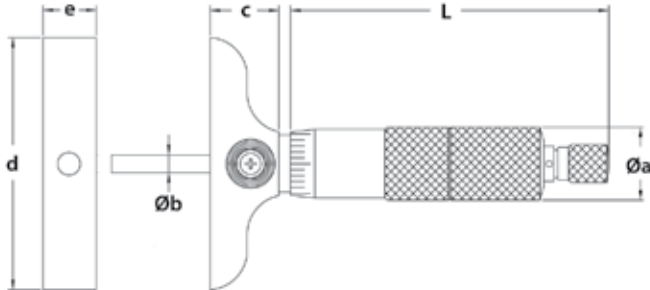
\$107.93
For MT shanks 1-3
Code 375502

\$140.08
For MT shanks 4-6
Code 375503

Depth Micrometer



\$213.39
Code 281924



- Graduation: 0.001"
- Micrometer head accuracy: ± 0.00012 "
- Rod accuracy: $\pm [0.001 + 0.0005(L/3)]$ (L = measuring range in inch)
- 6 rods with flat ends
- Ratchet stop
- Supplied in fitted storage case

Range (Inch)	L (Inch)	Øa (Inch)	Øb (Inch)	c (Inch)	d (Inch)	e (Inch)
0-6	3.228	0.709	0.177	0.669	3.996	0.669

Universal Protractor



- Range: 0-360°
- Graduation: 5'
- Accuracy: $\pm 5'$
- Parallax-free reading
- Two blades: 6" and 12"
- Stainless steel
- With fine adjustment
- Magnifier
- Supplied in fitted storage case

\$124.73
Code 283341



Telescoping Gage Set



- For quick measurement of inside diameter of holes and width of slots
- Satin chrome finish
- Supplied in storage pouch



\$38.20

5/16" to 6" (6 pcs)
Code 816202

Dial Test Indicators

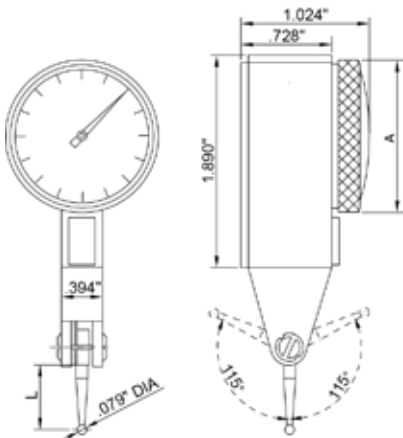


- Range: 0.03"
- Graduation: 0.0005"
- Accuracy: ± 0.0005 "
- Dial reading: 0-15-0
- Jeweled bearing
- Carbide contact point
- Two measuring directions
- Anti-magnetic body
- Supplied with two clamps: 5/32" and 3/8" diameters
- Supplied in fitted storage case



\$80.50
Code 816170

\$76.53
Code 282860



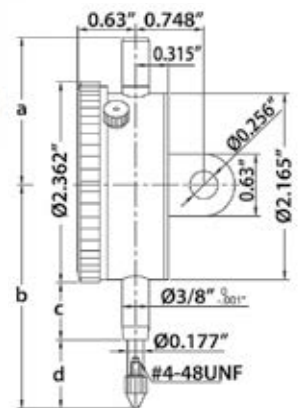
ØA (Inch)	L (Inch)	Code
1.181	0.500	816170
1.457	0.500	282860

Dial Indicator



\$62.40
Code 816160

- Graduation: 0.001"
- First 2.5 rev. accuracy: ± 0.001 "
- Overall accuracy: ± 0.004 "
- Range per rev.: 0.1"
- Dial reading: 0-100
- Meets ASME B89.1.10M-2001 standards
- Lug back
- Bezel locking clamp and tolerance index
- Contact point thread: #4-48UNF
- Supplied in fitted storage case



Range (Inch)	a (Inch)	b (Inch)	c (Inch)	d (Inch)
2	4.370	5.472	1.969	2.323

Fractional Reading Electronic Calipers



NIST
CERTIFICATION



\$82.98

0-6"/0-150mm
Code 280003

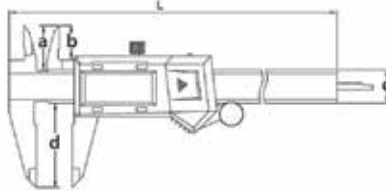
\$117.78

0-8"/0-200mm
Code 280004

\$177.09

0-12"/0-300mm
Code 280005

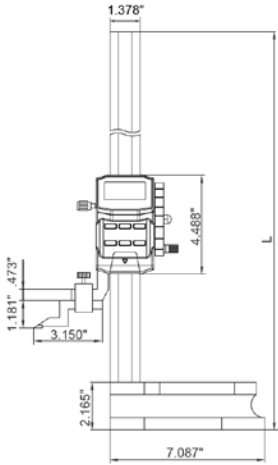
- Resolution: 0.0005", 1/128" (fractional), 0.01mm
- Accuracy: ± 0.0012 "
- Buttons: zero, unit (mm/inch/fraction), ABS (absolute and incremental measurement), on/off
- Auto power off
- Battery CR2032
- Stainless steel construction
- Supplied in fitted storage case



Range (Inch/mm)	L (Inch)	a (Inch)	b (Inch)	c (Inch)	d (Inch)
0-6/0-150	9.213	0.787	0.591	0.630	1.575
0-8/0-200	11.260	0.945	0.748	0.630	1.969
0-12/0-300	15.354	1.024	0.846	0.630	2.362

Electronic Height Gage

With Drive Wheel



- Resolution: 0.0005"/0.01mm
- L: 20.276"
- Accuracy: ± 0.0012 "
- Buttons: on/off, zero, inch/mm, preset +, preset -, hold
- Auto power off - move unit to turn power on
- Carbide-tipped scriber, stainless steel beam
- Battery CR2032
- Data output
- Supplied with vinyl dust cover

\$479.42

0-12"/0-300mm
Code 816634



Electronic Depth Gages



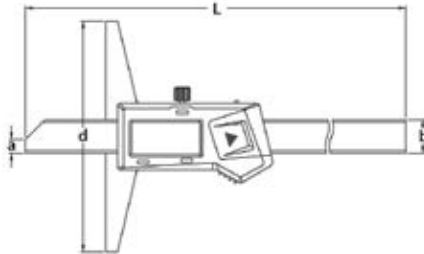
\$89.83

0-6"/0-150mm
Code 816040

\$109.08

0-8"/0-200mm
Code 816042

- Resolution: 0.0005"/0.01mm
- Accuracy: ± 0.0012 "
- Buttons: on/off, zero, inch/mm
- Battery CR2032
- Data output
- Stainless steel construction
- Supplied in fitted storage case



Range (Inch/mm)	L (Inch)	a (Inch)	b (Inch)	d (Inch)
0-6/0-150	9.055	0.236	0.571	3.937
0-8/0-200	11.024	0.236	0.571	3.937

Outside Micrometer



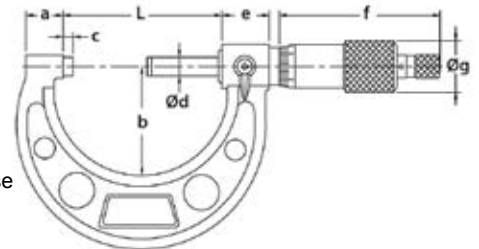
NIST
CERTIFICATION



\$28.93

Code 816564

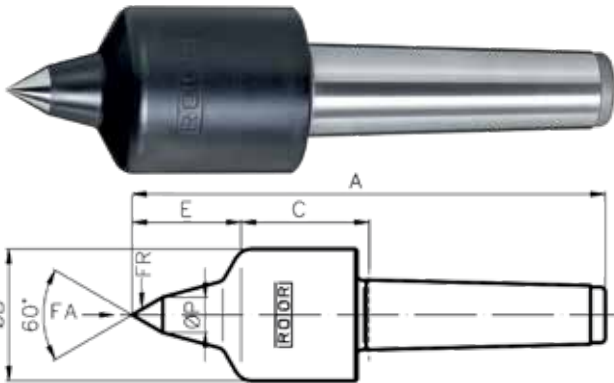
- Range: 0-1"
- Graduation: 0.0001"
- Accuracy: ± 0.00016 "
- Ratchet stop
- Carbide tips
- Supplied in fitted storage case



L (Inch)	a (Inch)	b (Inch)	c (Inch)	$\varnothing d$ (Inch)	e (Inch)	f (Inch)	$\varnothing g$ (Inch)
1.260	0.354	1.102	0.118	0.256	0.669	2.598	0.709

Live Centers

Type EV – 60° – High Speed Steel – Speed-Line



- Precise live centers for high turning rates
- Suitable for CNC/manual turning and grinding machines
- Optimal protection against splash and dirt
- Ground tapers conform to DIN 228 AT3
- Through-hardened 60° point
- Mounted with an angular contact ball bearing and deep grooved ball bearing

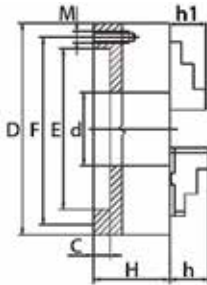
Accuracy of Speed-Line - Type EV

Morse Taper	T1 mm Maximum	T1 inch Maximum
2 ST, 2 SU, 3 ST	0.002	0.0001
3 SU, 4 ST, 4 SU, 5 ST	0.002	0.0001
5 SU, 6 ST	0.004	0.0002

Morse Taper	Model	A (mm)	ØB (mm)	C (mm)	E (mm)	ØP (mm)	Workpiece Maximum (kgs)	FR Maximum daN	FA Maximum daN	Maximum RPM	Code	Price
2	2 ST	134	38	38	31	8	180	90	90	13,500	826213	\$ 465.36
2	2 SU	147	45	44	37	12	260	130	115	11,000	826214	552.60
3	3 ST	164	45	45	37	12	260	130	115	11,000	826215	541.70
3	3 SU	183	55	61	39	16	440	220	260	8,500	826216	694.38
4	4 ST	206	55	62	39	16	440	220	260	8,500	826217	698.02
4	4 SU	233	70	68	50	20	670	335	440	6,700	826218	879.80
5	5 ST	250	70	70	50	20	670	335	440	6,700	826219	879.80
5	5 SU	268	82	84	53	20	950	475	925	5,300	826220	1,207.01
6	6 ST	322	82	84	53	20	950	475	925	5,300	826221	1,552.38

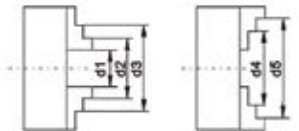
Universal Lathe Chucks

3-Jaw Self-Centering – Plain Back



- Semi-steel body
- 3 pinion design
- Plain back
- Backplates required

Standard Accessories:
 1 set of hard master jaws
 1 set of hard top reversible jaws
 1 wrench
 1 hex key



Series 3205 - Plain Back Mounting Specifications

Chuck Diameter (Inch)	RPM Max	Weight (lbs.)	d1 Min-Max (Inch)	d2 Min-Max (Inch)	d3 Min-Max (Inch)	d4 Min-Max (Inch)	d5 Min-Max (Inch)	M Thread	L (Inch)	No. of Bolts
6	3000	22	0.19 - 2.52	2.44 - 4.76	4.53 - 6.30	1.65 - 3.81	3.46 - 5.75	M10 x 1.5	0.98	3
8	2500	39	0.16 - 3.54	2.83 - 6.14	5.24 - 7.87	1.97 - 5.12	4.13 - 7.48	M10 x 1.5	0.98	6
10	2000	55	0.20 - 4.65	3.39 - 7.76	6.30 - 9.84	2.28 - 6.50	4.92 - 9.25	M12 x 1.75	1.18	6
12	1500	110	0.39 - 5.16	4.06 - 8.90	7.48 - 12.40	2.56 - 7.17	5.71 - 10.43	M16 x 2	1.18	6

Chuck Diameter (Inch)	d Hole Diameter (Inch)	Max. Hole Enlargement (Inch)	F (Inch)	E (Inch)	C (Inch)	H (Inch)	h (Inch)	h1 (Inch)	Code	Price
6	1.65	1.81	5.51	4.92	0.16	2.54	1.69	1.26	355001	\$ 825.36
8	2.17	2.56	6.93	6.30	0.16	2.95	1.77	1.14	355002	990.42
10	2.99	3.46	8.82	7.87	0.20	3.35	2.09	1.34	355003	1,427.98
12	4.06	4.33	11.26	10.24	0.20	3.70	2.24	1.69	355004	1,993.58



INDUSTRIAL INC.

www.kar.ca

Toronto: 1-800-387-3127
 Montréal: 1-800-363-7862
 Edmonton: 1-866-440-4326

Code #000286

Offer valid until March 31, 2019

*Products shown may not be exactly as illustrated

FOR QUALITY, VALUE AND SERVICE CALL YOUR KAR DISTRIBUTOR TODAY!