

# SOWA<sup>®</sup>

## METALWORKING SOLUTIONS



Canadians Supporting Canadians



Pricing valid from January 1 to March 31, 2019

## MIX & MATCH

2019 Winter Flyer



# CAT40 ER Collet Chucks & Collets

## Huge Savings on a 6-Pack

1. Select 6 Collet Chucks
2. Choose A Collet Set
3. Save \$\$

Promo Code **6PAK40**

Sale Price: **\$ 955.00**

Possible savings of up to **\$ 1,062.70**

(Promo not eligible for online ordering. Please be sure to include the promo code when sending or calling in your order.)



## CAT40 ER Collet Chucks

- Threaded through holes for a back-up screw (tool stop) or coolant through when removed
- Factory balanced to save spindle life, tool life, and increase productivity
- DIN coolant option - standard
- All Ground Body
- 100% Forged Construction
- Wrench not included



**CAT 40**  
Premium  
Balanced  
30k  
RPM

Description	Code No.	List \$
CAT40 ER16 x 2.50"	531-406	236.80
CAT40 ER16 x 3.50"	531-408	236.80
CAT40 ER20 x 2.50"	531-412	235.50
CAT40 ER20 x 4"	531-414	241.20
CAT40 ER25 x 2.50"	531-418	236.80
CAT40 ER25 x 4"	531-420	257.80
CAT40 ER32 x 2.50"	531-421	253.20
CAT40 ER32 x 3.13"	531-424	265.80

## ER Collet Sets



Description	Code No.	List \$
ER16 11pc 1/16" - 3/8"	337-440	215.00
ER25 17pc 1/8" - 5/8"	337-442	239.40
ER32 21pc 1/8" - 3/4"	337-444	422.90

Distributed by:



# 5 MICRON AA ER COLLET SETS

DIN 6343 Precision Collets have a runout of 20-30 microns (0.02 - 0.03mm).

GS High Precision Collets have a runout of 10-20 microns (0.01 - 0.02mm).

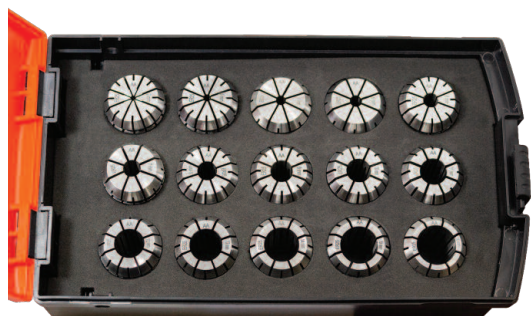
The new **GS Extreme Precision AA Collets** have a runout of only 5 microns (0.005mm).

## Features & Benefits:

- 12 slots instead of 16 allows sufficient collapse while increasing the area of contact with less tendency to distort.
- All edges are deburred and rounded to promote good interface with the taper of the chuck without the tendency to damage it. This results in more consistent repeatability.
- Collets are polished to eliminate blemishes that promote corrosion. Better corrosion resistance will result in longer product life of both the collet and the holder.
- Highly polished OD surfaces reduce the amount of force absorbed by friction between the collet and the collet chuck seat, increasing the grip force on the cutting tool. The inside bore of the collet is intentionally left unpolished to increase the friction between the collet and the cutting tool shank.
- Maximized Concentricity
- Evenly distributed cutting edges for high performance machining
- Minimized variation of cutting edges
- Consistent cutting profiles ensure the job stays within desired tolerances
- Improve system performance and lower cost per piece when used with quality GS chucks



**The result of an improved AA collet in a quality GS chuck is increased gripping force, improved rigidity, decreased runout, and a renewed confidence in your collet chuck system.**



336-989

For the full range of  
AA ER Collets visit  
[www.SowaTool.com](http://www.SowaTool.com)



## 5 Micron AA ER Collet Sets

### Inch

Series	No. Pcs.	Range	Code No.	SALE \$
ER11	Inch 7pc Set	1/16-1/4 x 1/32	336-992	204.72
ER16	Inch 11pc Set	1/16-3/8 x 1/32	336-993	321.12
ER20	Inch 15pc Set	1/16-1/2 x 1/32	336-994	462.96
ER25	Inch 18pc Set	3/32-5/8 x 1/32	336-995	569.58
ER32	Inch 21pc Set	1/8-3/4 x 1/32	336-996	660.18
ER40	Inch 15pc Set	1/8-1" x 1/16	336-997	505.20

### Metric

Series	No. Pcs.	Range	Code No.	SALE \$
ER11	Metric 13pc Set	1-7mm x 0.5mm	336-986	381.72
ER16	Metric 10pc Set	1-10mm x 1.0mm	336-987	288.18
ER20	Metric 12pc Set	2-13mm x 1.0mm	336-988	375.00
ER25	Metric 15pc Set	2-16mm x 1.0mm	336-989	475.26
ER32	Metric 18pc Set	3-20mm x 1.0mm	336-990	565.86
ER40	Metric 23pc Set	4-26mm x 1.0mm	336-991	774.66

# WORK HOLDING



- Gleason ground spiral bevel gears
- Internal coolant from positioning pin
- Internal air pressure

**SPECIAL**

**IN STOCK**

## Fixed Right Angle Heads

Taper	Model	Collet System	End Mill Drill Cap	Tap Size Capacity	Max R.P.M.	Code No.	Price \$
CAT40	GFX07	ER11	7mm	M6	10,000	381-002	6,092.00
CAT40	GFX07L	ER11	7mm	M6	10,000	381-302	5,895.00
CAT40	GFX10	ER16	10mm	M8	10,000	381-020	4,930.00
CAT40	GFX10L	ER16	10mm	M8	10,000	381-320	6,162.00
CAT40	GFX16	ER25	16mm	M12	8,000	381-100	6,011.00
CAT40	GFX16L	ER25	16mm	M12	8,000	381-400	7,409.00
CAT50	GFX10L	ER16	10mm	M8	10,000	381-322	6,162.00
CAT50	GFX16	ER25	16mm	M12	8,000	381-102	6,011.00
CAT50	GFX20	ER32	20mm	M16	4,000	381-148	6,355.00
CAT50	GFX20L	ER32	20mm	M16	4,000	381-448	7,944.00



## Pivoting Angle Heads

Taper	Model	Collet System	End Mill Drill Cap	Tap Size Capacity	Max R.P.M.	Code No.	Price \$
CAT40	GPV16	ER25	16mm	M12	4,000	381-270	7,043.00
CAT50	GPV13	ER20	13mm	M10	4,000	381-200	6,694.00
CAT50	GPV20	ER32	20mm	M16	4,000	381-150	7,546.00
BT40	GPV16	ER25	16mm	M12	4,000	381-274	7,043.00

**WE INVITE ALL INQUIRIES**

DOWNLOAD THE COMPLETE OFFERING AT [WWW.SOWATOOL.COM](http://WWW.SOWATOOL.COM)

## 3-Jaw Cast Iron Scroll Chucks - 2pc Hard Rev. Jaws



**QUALITY IMPORT**  
Ask for our complete range.



These chucks are designed for all types of workshop machining operations on conventional lathes and milling fixtures.

- Smart design allowing inner parts to be replaced quickly

Chuck Dia.	Hole Dia.	Mount	Weight (lbs)	Code No.	SALE \$
6"	1.575"	Plain Back	18.26	4440710	221.83
8"	2.559"	Plain Back	31.02	4440715	291.13

## Kitagawa Power Chuck Jaws



Models B, BT, B200, BT200, HOH, HOB, N, NL  
• 1.5mm x 60° Serrated



Chuck Dia.	A	B	C	D	K	Screw Size	Set of 3 Code No.	SALE \$
6"	70	38	25	12	20	M10	656-050	48.79
8"	90	50	38	14	25	M12	656-055	66.36
10"	120	50	38	16	30	M12	656-060	76.79

## Soft Jaw Forming Ring



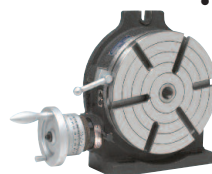
The forming ring is used for cutting soft jaws by clamping and extending the thru hole to increase the accuracy of clamping the workpiece



- The size can be adjusted against the helical slot.
- Pin can be rotated 180° to extend the clamping range.
- No need to drill new hole. The hole on the soft jaw can be used directly for pin
- Hardened and ground steel for durability

Model	Chuck Dia.	Weight (kg)	Code No.	SALE \$
VFR-10	10"	3.2	326-265	435.26

## Horizontal & Vertical Rotary/Dividing Table



- This HV Type Rotary Table is so designed as to permit machining operations at a higher dimension than that of RT Type rotary tables
- The base can be used in a vertical position to enable it to carry out centre work

Model	Table OD	Base Dim.	T-Slot Width	Centre Sleeve	Code No.	SALE \$
HV-6	150mm	200x160mm	11mm	MT2	326-500	626.15



## IP67 Coolant Proof Digital Calipers

- Resolution: 0.0005" / 0.01mm
- Hold function for easy reading
- Absolute and incremental measuring modes
- Inch/Metric conversion
- Metal Housing: the design will allow the caliper to be used in normal workshop conditions and is resistant to coolant, water, dust, and oil



Range	Accuracy	Code No.	SALE \$
0-6"/0-150mm	±0.001"/0.02mm	7305062	147.65
0-8"/0-200mm	±0.0015"/0.03mm	7305082	226.25
0-12"/0-300mm	±0.0015"/0.03mm	7305122	272.45

## Absolute Digital Calipers

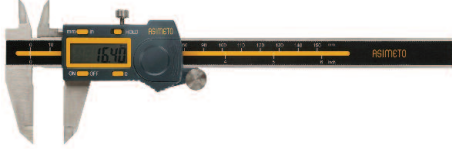
- Resolution: 0.0005" / 0.01mm
- Absolute and Incremental modes available
- Inch/Metric conversion
- A thumb wheel is provided for easy use



Range	Accuracy	Code No.	SALE \$
0-6"/0-150mm	±0.001"/0.02mm	7307563	102.70
0-8"/0-200mm	±0.0015"/0.03mm	7307583	129.60
0-12"/0-300mm	±0.0015"/0.03mm	7307623	168.45

## Digital Calipers

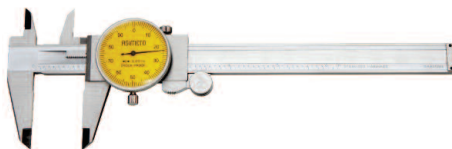
- Resolution 0.0005" / 0.01mm
- The origin position is retained through the on/off cycle
- Inch/Metric conversion



Range	Accuracy	Code No.	SALE \$
0-6"/0-150mm	±0.001"/0.02mm	7307065	48.55
0-8"/0-200mm	±0.0015"/0.03mm	7307085	71.75
0-12"/0-300mm	±0.0015"/0.03mm	7307125	107.55

## Dial Calipers

- Graduation: 0.001"
- Stainless steel construction with all measuring surfaces surface-hardened
- The dual pinion mechanism offers ultra smooth feel
- Preloaded pinion offers better repeatability
- Thumbwheel



Range	Accuracy	Code No.	SALE \$
0-6"	±0.001"	7303061	48.05
0-8"	±0.0015"	7303081	63.70
0-12"	±0.0015"	7303121	111.65

## IP65 Digital Outside Micrometer w/ SPC

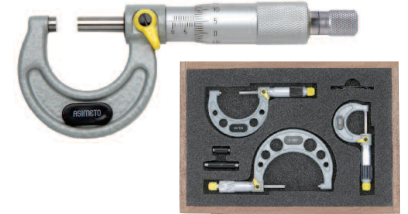
- Resolution Digital: 0.00005"/ 0.001mm Scale: 0.0001"
- Dual Ratchet combines both the Ratchet Stop and Friction Thimble
- Protection level IP65
- Upon switch-on the display will read the actual absolute measuring position
- Automatic On/Off to maximize battery life
- Inch/Metric conversion
- Absolute or incremental measuring modes
- Carbide tipped measuring faces



Range	Accuracy	Code No.	SALE \$
0-1"/0-25mm	±0.0001"/0.002mm	7105015	151.50

## Outside Micrometers

- Flatness: 0.000024" / 0.6µm
- Carbide tipped measuring faces
- Grey painted steel frame
- Graduation: 0.0001"
- Ratchet Stop



Range	Accuracy	Code No.	SALE \$
0-1"	±0.0001"	7101013	31.15
1-2"	±0.0002"	7101023	34.75

## SETS

Range	Code No.	SALE \$
0-3"	7101637	91.30
0-6"	7101667	304.60

## Economical Digital Outside Micrometer

- Resolution 0.00005"/ 0.001mm
- Carbide tipped measuring faces
- Spindle dia.: 0.25"
- Friction thimble
- Inch/Metric conversion
- Absolute or incremental measuring modes
- Automatic On/Off to maximize battery life
- Ball Anvil included



Range	Accuracy	Code No.	SALE \$
0-1"/0-25mm	±0.00016"/0.004mm	7116011	89.60

## AGD2 Dial Indicator

- Dial face dia.: 2.20"/ 58mm
- Internal tolerance marker
- Flat back (attached) and lug back supplied
- With counter pointer
- Dial Reading: 0-100
- Range/Rev: 0.1"
- Accuracy: ±0.002"



Range	Graduation	Code No.	SALE \$
1"	0.001"	7402261	28.85

### Centering Indicator

- Graduation 0.0005" • Provides a simplified method of centering a work piece or fixture on horizontal for vertical machines, internal or external diameters. Face of indicator remains stationary in any desired position while the machine spindle rotates, leaving the operator with both hands free to accurately position the machine table
- Shank Dia.: 3/8"
- Operating speed not to exceed 800rpm
- Range  
Internal: 5/32" - 12"  
External: Up to 12"



Dial Range	Accuracy	Code No.	SALE \$
0-0.15"	±0.0002"	7469008	179.15

### Dial Test Indicator Sets

- Graduation: 0.0005"
- Jeweled bearings
- Comes with Ø3/8" dovetail stems
- Easy to read yellow face
- Carbide tipped contact point
- 1.26" dia. dial face

Range	Accuracy	Dial Reading	Type	Code No.	SALE \$
0.03"	±0.0005"	0-15-0	Horizontal	7501733	77.30
<b>Full Set</b>					
0.03"	±0.0005"	0-15-0	Horizontal	7501738	97.65

Full Set	Base Set
Carbide tipped point DIA. Ø2mm Steel point DIA. Ø1mm Stem Dia. Metric 4mm Inch 0.157" Swivel Clamp Metric for Ø4mm, & Ø8mm Dia. Inch for 3/8", & 0.157" Dia. Holding Bar Metric 9x9x100mm Inch 0.25"x0.5"x4"	Horizontal Stem Dia. Metric Ø8mm Inch Ø3/8" Knurled Clamping Ring wrench

### Dial Bore Gauge

- Moveable probe pin with carbide ball
- Graduation is 0.0001"
- 11 anvils, 1 sub-anvil, 4 spacers



Range	Dial Travel	Probe Depth	Code No.	SALE \$
2.0 - 6.0"	0.05" (AGD2)	6"	7483311	156.60

### Articulating Arm Magnetic Bases

- Dial gauges can be held by the 3/8" or 8mm diameter stem or by the lug backing plate
- Arm has 3 articulating joints that can be locked with the single hand knob
- The precision surfaces and the bottom V are securely fastened to the ferrous work piece or machine table when the rotary knob is in the On position
- Working angle 150°



Power	Base	Height	Code No.	SALE \$
80kg	60x50x55mm	350mm	7602021	98.60
80kg	60x50x55mm	440mm	7602031	129.65

### Magnetic Bases

- Accepts test indicators with dovetail clamping mechanism
- Dial gauges can be held by the 3/8" or 8mm diameter stem or by the lug backing plate
- The rotary knob switches natural magnet On or Off
- The precision surfaces and the bottom V are securely fastened to the ferrous work piece or machine table when the rotary knob is in the On position
- #7601021 with Fine Adjustment.



Power	Base	Main Stem	Code No.	SALE \$
80kg	60x50x55mm	Ø12mm	7601011	25.45
80kg	60x50x55mm	Ø12mm	7601021	23.55

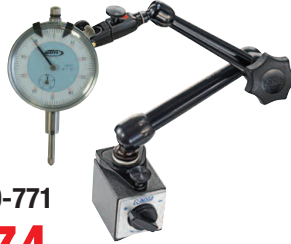


## Noga Mag Base / STM Indicator Combos

MG6161 (165-501)

### MG HOLDER WITH DOUBLE FINE ADJUSTMENT

- New double fine adjustment  
Bottom: unique single direction  
Top: universal swivel clamp
- Holds 6mm, 8mm, 3/8", dovetail, and lug back
- Five axis holder
- Unique central locking mechanism with Noga designed spring loaded bearing
- Powerful magnetic base 80kg/f



Code No.: 500-771  
**\$233.74**

### DIAL INDICATOR (200-010)

- 1", 0 - 100, 0.001"
- Reverse counter
- Stainless steel components
- Rotating bezel with clamp
- Lugback (1/4" hole)
- Interchangeable point
- Conforms to AGD 2 standards
- Teclock Style

DG1033 (165-350)

### DG STANDARD HOLDER

- 11" reach
- Noga central locking mechanism with Noga designed spring loaded bearing
- Powerful On/Off magnetic base (80kgf)
- Dial gauge holder is three-dimensional



### DIAL INDICATOR (200-718)

- 1/2", 0 - 100, 0.001"
- Reverse counter
- Stainless steel components
- Rotating bezel with clamp
- Lugback (1/4" hole)
- Interchangeable point
- Conforms to AGD 2 standards

Code No.: 500-334  
**\$178.62**

## Promo "N" Set - NG8000

For Steel, Aluminum, Plastic  
Contains: NogaGrip-2 handle  
10pcs N1 blades



Model	Code No.	SALE \$
NG8000	165-474	<b>18.87</b>

## "N" Cobalt Set - NG8100

For Plastic & Hard Materials  
Contains: NogaGrip-2 handle  
20pcs N10 Cobalt blades



Model	Code No.	SALE \$
NG8100	165-466	<b>40.21</b>

## Promo "S" Set - NG8150

For Steel, Aluminum, Plastic  
Contains: NogaGrip-1 handle  
10pcs S10 blades



Model	Code No.	SALE \$
NG8150	165-464	<b>20.57</b>

## "S" Golden Set - NG8152 TiN

For Abrasive Materials  
Contains: NogaGrip-1 handle  
10pcs S10 TiN coated blades



Model	Code No.	SALE \$
NG8152	165-460	<b>32.47</b>

## "N" Economy Set - NG8050

For Steel, Aluminum, Plastic  
Contains: NogaGrip-2 handle  
20pcs N1 blades



Model	Code No.	SALE \$
NG8050	165-478	<b>28.65</b>

## "N" Golden Set - NG8002 TiN

For Steel, Aluminum, Plastic  
Contains: NogaGrip-2 handle  
10pcs N1 TiN coated blades



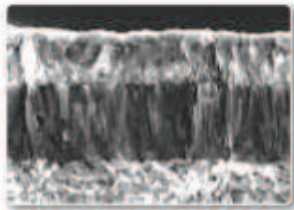
Model	Code No.	SALE \$
NG8002	165-465	<b>26.69</b>

Ask for our new Noga Brochure or download it from [SowaTool.com](http://SowaTool.com)

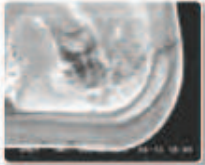




## STEEL TURNING CVD GRADE



[ Current Grade ]



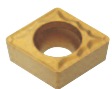
[ New Grade (PT22C) ]

- Good surface roughness and welding resistance.
- Oxidation resistance at high temperatures and plastic deformation resistance.
- Excellent chipping resistance due to improved adhesion.
- Fine coating layer with toughness and wear resistance.
- Exclusive substrate material to improve wear resistance.

FOR MORE INFORMATION  
ABOUT THE **PT22C** INSERT  
CALL TODAY TO GET A COPY  
OF OUR TECH BROCHURE OR  
DOWNLOAD IT AT  
[www.sowatool.com](http://www.sowatool.com)



## JUST A SMALL SAMPLE OF A WIDE RANGE OF GEOMETRIES & CHIP BREAKERS



### CCMT32.52-F2P

Excellent chip control at shallow depth of cut and low feed rate. Suitable for stainless steel cutting.

Code No.: 148-738

**\$7.74**

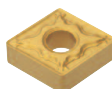


### SCMT32.52-F3P

Excellent chip control at shallow depth of cut and low feed rate. Excellent surface finish due to reduced cutting force. Suitable for fine boring.

Code No.: 146-554

**\$7.32**



### CNMG432-M

Wide available chip control range from medium-finishing to medium-roughing. Suitable chip breaker for CNC machining.

Code No.: 146-677

**\$9.12**



### TCMT32.52-F3P

Excellent chip control at shallow depth of cut and low feed rate. Excellent surface finish due to reduced cutting force. Suitable for fine boring.

Code No.: 148-707

**\$8.88**



### CNMM433-R3

Specially designed tough cutting edge provides superior cutting performance at deep depth of cut and fast feed rate. Smooth chip flow and reduced cutting force.

Code No.: 146-663

**\$8.34**



### TNMG332-M

Wide available chip control range from medium-finishing to medium-roughing. Suitable chip breaker for CNC machining.

Code No.: 148-764

**\$7.98**



### DCMT32.51-F2P

Excellent chip control at shallow depth of cut and low feed rate. Suitable for stainless steel cutting.

Code No.: 148-736

**\$9.60**

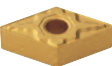


### TNMG431-M

Wide available chip control range from medium-finishing to medium-roughing. Suitable chip breaker for CNC machining.

Code No.: 146-572

**\$11.28**



### DNMG432-M1

Wide available chip control range from medium-finishing to medium-roughing. Suitable chip breaker for CNC machining.

Code No.: 145-652

**\$11.16**



### WNMG432-M

Wide available chip control range from medium-finishing to medium-roughing. Suitable chip breaker for CNC machining.

Code No.: 148-773

**\$9.12**



### KNUX160405-R11

Suitable for general cutting conditions.

Code No.: 148-677

**\$14.46**

# Multi-tasking Vises

## Tool Box



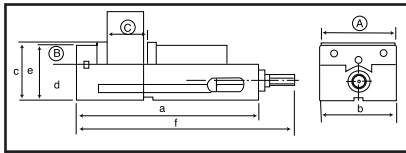
- ABS plastic
- Two levered trays



Model	Dimensions (mm)	Code No.	SALE \$
VTB-102	420W x 235D x 180H	326-546	<b>69.72</b>

## Precision Lock-Well II Milling Vises

This slightly modified version of the famous AUTO-WELL Lock-Well vise has features including the exclusive LOCK DOWN principle which guarantees that the movable jaw stays securely down during machining.



Model No.	A	B	C	a	b	c	d	e	f	Weight	Code No.	SALE \$
AMC-40	102	40	120	332	105	108	68	100	372	20 kg	327-150	<b>711.90</b>
AMC-60	152	44	146	370	154	117	73	111	438	30 kg	327-155	<b>905.10</b>

## Precision Milling Machine Vise



- Vises are matched (bed height: 2.875")
- Interchangeable soft jaws
- Chip cover protects leadscrew from damage
- An integral key and large fasteners reduce deflection by 50%



8" X 10" Opening: **\$1,522.08** - Code # 327-300

## Multi-tasking 5-Axis Modular Vises



MADE IN ITALY

The MULTITASKING range of vises has been specially designed for 5-axis machines. Working on 5 sides of the workpiece, it allows the best optimization of the machining cycle. Thanks to the compact design this kind of vise can be installed on all machining centers. The use of GRIP jaws is strongly recommended with multitasking vises.

- Self-centering or eccentric
- Eccentric jaw adjustment in steps of 2mm
- Highest accuracy in positioning and alignment ( $\pm 0.02\text{mm}$ ) due to ground rack teeth on both the base and the fixed jaws
- Minimum deflection
- Solid, rigid construction and maximum clamping ratio to the total length
- Positioning through ground holes or keyways
- All case hardened to HRC60 for durability

Type 1 & 2

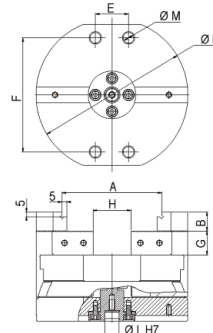


Type 3

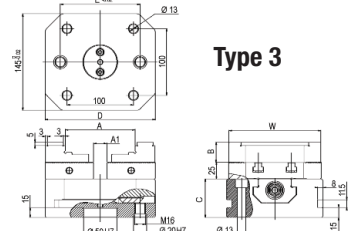


Vise shown with riser

Type 1 & 2



Type 3



	Type 1	Type 2	Type 3x166	Type 3x266
Code No.	<b>382-520</b>	<b>382-522</b>	<b>382-524</b>	<b>382-526</b>
SALE \$	<b>2,094.54</b>	<b>2,792.65</b>	<b>3,211.46</b>	<b>3,351.11</b>
A	74	104	108	208
A1	-	-	20	60
W	74	99	138	138
B	15	20	30	30
C	50	70	58	58
$\phi D/D$	120	160	<b>166</b>	<b>266</b>
E	5	35	120	200
F	92	120	-	-
G	20	25	-	-
H	20	40	-	-
$\phi L$ H7	20	20	-	-
M	9	11	-	-
kg	4.9	11	13	20
kN	16	20	30	30

Pricing valid from January 1 to March 31, 2019 or while quantities last.

We reserve the right to make changes without notice and accept no liabilities for mistakes and printing errors. All taxes extra.



Sowa Tool & Machine Co. Ltd.  
500 Manitou Drive  
Kitchener, Ontario  
N2C 1L3

Western Canada Branch  
9649-49th Ave  
Edmonton, AB  
T6E 5Z5

Toll Free: 1-800-265-8221  
Phone: (519) 748-5750  
Fax: (519) 748-9304  
sales@sowatool.com  
www.sowatool.com

