

# WINTER FLYER 2019

Be Smart. Be Safe. Be Sure.



## Industrial Series Torque Wrenches

JITW-14250

**Tested to 12,000 Cycles**



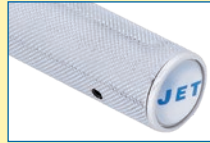
- All metal construction for the toughest, most demanding industrial applications
- Chrome Molybdenum ratchet pawls and teeth heat treated for maximum durability and high torque loads
- Accurate to +/-3% clockwise and +/-6% counter clockwise
- Quick release ratchet head holds sockets and accessories safely and securely
- Life cycle tested to 12,000 cycles and 130% of rated capacity
- Hardened steel tube for long life and improved accuracy
- Knurled aluminum handle for safe, slip-resistant grip
- Dual scales for use on Imperial or Metric fasteners
- All units calibrated in both directions and shipped complete with factory calibration certificate
- Complete with heavy duty blow mould case



Quick release ratchet head



Dual scales



Slip resistant grip



**TOOLS & EQUIPMENT**

PROD. NO.	MOD. NO.	Drive	Torque Range	Length	List	Sale
718971	JITW-14250	1/4"	50 - 250 in/lb (6.8 - 27.1 Nm)	9-3/4"	\$253.50	<b>\$146.95</b>
718973	JITW-38100	3/8"	20 - 100 ft/lb (33.9 - 128.8 Nm)	17"	\$293.10	<b>\$169.95</b>
718976	JITW-12250	1/2"	50 - 250 ft/lb (75 - 332 Nm)	24"	\$338.00	<b>\$196.00</b>
718977	JITW-34600	3/4"	150 - 600 ft/lb (237 - 779 Nm)	48-7/8"	\$1,205.50	<b>\$699.95</b>
718980	JITW-10100	1"	200 - 1,000 ft/lb (305 - 1,322 Nm)	72-7/8"	\$2,586.00	<b>\$1,499.00</b>

**Sale Pricing in Effect January 1 – March 31, 2019**

Distributed by

### 42 PC 1/4" DR SAE/Metric Socket Wrench Set - 6 Point



- 3/16 - 1/2"
- 4 - 12 mm
- Standard and deep length
- CrV Steel

600125 SW1442C-6 | List \$160.30

**SALE \$92.95**

### 21 PC 3/8" DR SAE Socket Wrench Set - 6 Point

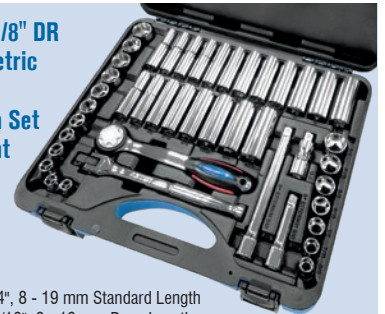


- 3/8 - 3/4" Standard Length
- 3/8 - 13/16" Deep Length
- CrV Steel

600229 SW3821-6 | List \$181.00

**SALE \$104.95**

### 45 PC 3/8" DR SAE/Metric Socket Wrench Set - 6 Point



- 3/8 - 3/4", 8 - 19 mm Standard Length
- 3/8 - 13/16", 8 - 19 mm Deep Length
- CrV Steel

600241 SW3845C-6 | List \$310.35

**SALE \$179.95**

### 42 PC 1/4" DR SAE/Metric Socket Wrench Set - 12 Point



- 3/16 - 1/2", 4 - 12 mm Standard and Deep Length
- CrV Steel

600126 SW1442C-12 | List \$163.75

**SALE \$94.95**

### 55 PC 1/2" DR SAE/Metric Socket Wrench Set - 6 Point



- 3/8 - 1-1/4", 10 - 32 mm Standard Length
- 7/16 - 7/8", 10 - 21 mm Deep Length
- CrV Steel

600341 SW1255C-6 | List \$500.05

**SALE \$289.95**

### 45 PC 3/8" DR SAE/Metric Socket Wrench Set - 12 Point



- 3/8 - 3/4", 8 - 19 mm Standard Length
- 3/8 - 13/16", 8 - 19 mm Deep Length
- CrV Steel

600242 SW3845C-12 | List \$327.60

**SALE \$189.95**

### 21 PC 3/4" DR SAE Socket Wrench Set - 12 Point



- 3/4" - 2"
- CrV Steel

600406 SW7521-HD | List \$633.95

**SALE \$349.95**

### 21 PC 1" DR SAE Socket Wrench Set - 12 Point



- 1-7/16 - 3-1/8"
- CrV Steel

600503 SW1021 | List \$1,900.35

**SALE \$1,049.00**

### 15 PC 1/2" DR SAE Socket Set - 12 Point



- 3/8 - 1-1/4" includes socket rail
- CrV Steel

600137 SS1215-12 | List \$125.40

**SALE \$72.95**

### 3/8" DR Articulating Head Ratchet Wrench



**SUPER SPECIAL**

- 3/8" drive ratchet head rotates around articulating joint, providing up to 8x the speed of a regular ratchet
- Rotating head can be locked in any position to clear obstacles and provide maximum access
- 6140 Chrome Vanadium steel for professional use
- Mirror polished finish
- Meets ANSI torque rating for 3/8" drive ratchets

671944 HSR-3800 | List \$103.40

**SALE \$39.95**

### 3 PC Ratchet Wrench Set



- Mini head ratchet at no charge!

690106 RHQ-3SB | List \$172.40

**SALE \$99.95**

### 13 PC 1/2" DR Deep SAE Socket Set - 12 Point



- 7/16 - 1-1/4" includes socket rail
- CrV Steel

600138 SS1213D-12 | List \$189.60

**SALE \$109.95**

## 3/4" DR Oval Head Ratchet Wrench - Heavy Duty



- 24 teeth
- Quick release

673922 RHQ-34 | List \$232.75

**SALE \$134.95**

## Hex Bit Socket Sets



- 2" Overall Length
- Includes rail
- S2 steel

PROD. NO.	MOD. NO.	Sizes	List	Sale
601201	HSW3811	1/8, 5/32, 3/16, 7/32, 1/4, 5/16, 3/8"	\$49.40	\$28.65
601202	HSW3811M	3, 4, 5, 6, 7, 8, 10 mm	\$49.40	\$28.65

## Hex Bit Socket Sets



- Includes socket rail
- S2 steel

PROD. NO.	MOD. NO.	Sizes	List	Sale
601804	LHSW3807	1/8, 5/32, 3/16, 7/32, 1/4, 5/16, 3/8"	\$86.15	\$49.95
601805	LHSW3807M	4, 5, 6, 7, 8, 9, 10 mm	\$86.15	\$49.95

## 7 PC 1/4" DR External TORX® Socket Set



- E4 - E11 includes socket rail

601111 SS1407TS | List \$28.85

**SALE \$16.75**

## 12 PC 3/8" DR External TORX® Socket Set



- E4 - E20 includes socket rail

601232 SS3812TS | List \$65.05

**SALE \$37.95**

## 9 PC 1/2" DR TORX® Socket Set



- E10 - E24 includes socket rail

601321 SS1209TS | List \$68.40

**SALE \$39.95**

## 6 PC Tamperproof TORX® Bit Socket Set



- T25 - T55 includes socket rail
- TORX®

601216 SS386TB | List \$49.40

**SALE \$28.65**

## 3/8" DR 3 PC Locking Extension Bar Set



- Colour coded for drive size
- CrV Steel

690124 SE38-3SL | List \$78.45

**SALE \$39.95**



## 1/2" DR 3 PC Locking Extension Bar Set



- Colour coded for drive size
- CrV Steel

690125 SE12-3SL | List \$86.15

**SALE \$44.95**



## Ratcheting Breaker Bars



- Swivel head breaker bar with 24 tooth ratchet action

PROD. NO.	MOD. NO.	Length	List	Sale
672932	JRBB-18	18"	\$103.60	\$59.95
672933	JRBB-24	24"	\$110.30	\$63.95

## 3/8" DR 4 PC 2 Way Extension Bar Set



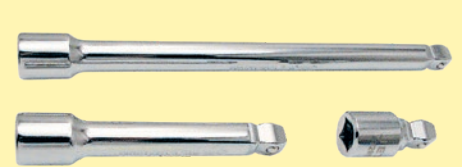
- 2 bars in 1!
- CrV Steel

690122 SE38-4SW | List \$58.55

**SALE \$29.95**



## 1/2" DR 3 PC 2 Way Extension Bar Set



- 2 bars in 1!
- CrV Steel

690123 SE12-3SW | List \$62.95

**SALE \$33.95**



### 8 PC 3/8" DR SAE Impact Socket Set - 6 Point



- 5/16 - 3/4"
- CrMo Steel

610201 PS838 | List \$60.30

**SALE \$34.95**

### 8 PC 3/8" DR Deep SAE Impact Socket Set - 6 Point



- 5/16 - 3/4"
- CrMo Steel

610203 PS838D | List \$86.15

**SALE \$49.95**

### 13 PC 1/2" DR SAE Impact Socket Set - 6 Point



- 7/16 - 1-1/4"
- CrMo Steel

610321 PS1312 | List \$119.95

**SALE \$69.95**

### 12 PC 3/8" DR SAE Impact Socket Set - 6 Point



- 5/16 - 1"
- CrMo Steel

610207 PS1238 | List \$103.40

**SALE \$59.95**

### 12 PC 3/8" DR Deep SAE Impact Socket Set - 6 point



- 5/16 - 1"
- CrMo Steel

610208 PS1238D | List \$172.40

**SALE \$99.95**

### 13 PC 1/2" DR Deep SAE Impact Socket Set - 6 Point



- 7/16 - 1-1/4"
- CrMo Steel

610323 PS1312D | List \$194.80

**SALE \$112.95**

### 27 PC 1/2" DR Deep SAE/Metric Impact Socket Set - 6 Point

**SUPER SPECIAL**



- 7/16 - 1-1/4"
- 10 - 24 mm
- 5" extension and universal joint
- CrMo Steel

610327 PS2712DC | List \$465.55

**SALE \$239.95**

### 8 PC 3/4" DR SAE Impact Socket Set - 6 Point



- 1 - 1-1/2"
- CrMo Steel

610401 PS834 | List \$253.35

**SALE \$146.95**

### 8 PC 3/4" DR Deep SAE Impact Socket Set - 6 Point



- 1 - 1-1/2"
- CrMo Steel

610402 PS834D | List \$361.90

**SALE \$209.95**

### 5 PC 1/2" DR Mag Wheel Impact Socket Set



- 13/16 - 7/8", 17 - 21 mm
- Colour coded for identification

610341 MWPS-512 | List \$144.80

**SALE \$83.95**

### 21 PC 3/4" DR SAE Impact Socket Set - 6 Point



- 3/4 - 2"
- CrMo Steel

610409 PS2134 | List \$723.85

**SALE \$419.95**

### 18 PC 1" DR SAE Impact Socket Set - 6 Point



**SUPER SPECIAL**

- 3/4 - 2"
- CrMo Steel

610509 PS1801 | List \$722.55

**SALE \$397.95**

## 8 PC 1/2" DR SAE Hex Bit Impact Socket Set



• 1/4 - 3/4"  
**610331** PHB-1208 | List \$149.95

**SALE \$86.95**

## 8 PC 1/2" DR Metric Hex Bit Impact Socket Set



• 6 - 19 mm  
**610333** PHB1208M | List \$149.95

**SALE \$86.95**

## 17 PC 3/8" & 1/2" DR External TORX® Impact Socket Set



• 3/8" : E5 - E16  
 • 1/2" : E10 - E24  
 • CrMo Steel  
**610391** PTS17C | List \$137.90

**SALE \$79.95**

## 5 PC 3/4" DR SAE Impact Hex Bit Socket Set



• 3" Length: 5/8 - 1-1/4"  
**610411** PHB-3405 | List \$241.35

**SALE \$139.95**

## 5 PC 3/4" DR Metric Impact Hex Bit Socket Set



• 3" Length: 17 - 27 mm  
**610421** PHB3405M | List \$241.35

**SALE \$139.95**

## 5 PC Pin Free Locking Impact U-Joint Adaptors



• Patented hex ball and socket design eliminates connecting pin for increased safety  
 • Ball and socket distributes force evenly for greater torque and longer life  
 • Eliminates broken connecting pins, the major source of U joint failures

**610902** PLUJ-5S | List \$162.70

**SALE \$89.95**

## 5 PC 1/2" DR Torque Limiting Impact Extension Set



• Flexes to limit torque  
 • CrMo Steel  
**682961** JTLE-5S | List \$258.60

**SALE \$149.95**

## 5 PC Impact Accessory Kit



• 3/4 + 1" Drive  
**610906** PSA3401-5 | List \$351.70

**SALE \$203.95**

## 7 PC Impact Accessory Kit



• 3/8" + 1/2" Drive  
**610903** PSA3812-7 | List \$129.95

**SALE \$75.95**

## 7 PC 1/2" DR SAE Universal Impact Socket Set - 6 Point



• 1/2 - 7/8"  
 • CrMo Steel  
**610382** PSU712 | List \$250.00

**SALE \$144.95**

## 9 PC 1/2" DR Metric Universal Impact Socket Set - 6 Point



• 13 - 22 mm  
 • CrMo Steel  
**610388** PSU912M | List \$293.10

**SALE \$169.95**

**JET now carries 1-1/2" and 2-1/2" DR impact sockets in stock. Visit [surewerx.com](http://surewerx.com) or see your local distributor.**



### 11 PC SAE Raised Panel Combination Wrench Set



- 3/8 - 1"
- CrV Steel
- Terylene pouch

**700115** CWS-11S | List \$146.50

**SALE \$84.95**

### 16 PC SAE Raised Panel Combination Wrench Set



- 1/4 - 1-1/4"
- CrV Steel
- Terylene pouch

**700121** CWS-16S | List \$224.10

**SALE \$129.95**

### 32 PC SAE/Metric Raised Panel Combination Wrench Set



- 1/4 - 1-1/4"
- 7 - 24 mm
- CrV Steel
- Blow mould case

**700201** CWS-32SM | List \$339.90

**SALE \$189.95**

### 11 PC Metric Raised Panel Combination Wrench Set



- 8 - 19 mm
- CrV Steel
- Terylene pouch

**700167** CWS-11M | List \$96.00

**SALE \$54.95**

### 16 PC Metric Raised Panel Combination Wrench Set



- 7 - 24 mm
- CrV Steel
- Terylene pouch

**700173** CWS-16M | List \$172.40

**SALE \$99.95**

### 22 PC Metric Raised Panel Combination Wrench Set



- 7 - 32 mm
- CrV Steel
- Terylene pouch

**700177** CWS-22M | List \$267.25

**SALE \$154.95**

### SAE Jumbo Raised Panel Combination Wrenches

**SUPER SPECIAL**



- S45C Alloy Steel

PROD. NO.	Size	List	Sale
700518	1-5/16"	\$50.55	\$25.95
700519	1-3/8"	\$56.45	\$28.95
700520	1-7/16"	\$63.50	\$32.50
700521	1-1/2"	\$66.20	\$33.95
700523	1-5/8"	\$98.95	\$49.95
700524	1-11/16"	\$100.90	\$51.00
700525	1-3/4"	\$102.35	\$52.00
700526	1-13/16"	\$110.25	\$55.95
700527	1-7/8"	\$128.80	\$64.95
700529	2"	\$139.30	\$69.95
700531	2-1/8"	\$285.60	\$144.95
700533	2-1/4"	\$314.70	\$159.95
700535	2-3/8"	\$342.70	\$173.95
700537	2-1/2"	\$350.20	\$177.95

### 11 PC Long SAE Fully Polished Combination Wrench Set



- 1/4 - 7/8" includes plastic rack
- CrV Steel

**700132** LCWS-11S | List \$142.55

**SALE \$82.95**

### 11 PC Long Metric Fully Polished Combination Wrench Set



- 8 - 19 mm includes plastic rack
- CrV Steel

**700182** LCWS-11M | List \$136.15

**SALE \$78.95**

### 8 PC Long SAE Ratcheting Combination Wrench Set

**SUPER SPECIAL**



- 5/16 - 3/4"
- CrV Steel
- Plastic rack

**700308** RCWS-8S | List \$186.15

**SALE \$79.95**

### 7 PC Long Metric Ratcheting Combination Wrench Set

**SUPER SPECIAL**



- 8 - 18 mm
- CrV Steel
- Plastic rack

**700164** RCWS-7M | List \$158.40

**SALE \$69.95**

## 11 PC SAE Flex Head Ratchet Combination Wrench Set



- Flex head design allows up to 180° flex for increased access to confined areas
- Light tension holds position while allowing easy adjustment of angle

**700331 RCWS-11FS** | List \$465.55

**SALE \$269.95**

## 11 PC Metric Flex Head Ratchet Combination Wrench Set



- Flex head design allows up to 180° flex for increased access to confined areas
- Light tension holds position while allowing easy adjustment of angle

**700381 RCWS-11FM** | List \$413.85

**SALE \$239.95**

## 3 PC Adjustable Wrench Set



- Contains: 8, 10, and 12" wrenches

**711102 AW-3S** | List \$74.05

**SALE \$42.95**

## Crowfoot Wrenches



- For 719111: 3/8 - 7/8" 6 pt
- For 719121: 10 - 19 mm 6 pt
- Includes socket rail

PROD. NO.	MOD. NO.	Pieces	List	Sale
719111	FNC-8	8	\$94.75	\$54.95
719121	FNC-10M	10	\$112.00	\$64.95

## 1/4" DR 50 in/lb Torque Screwdriver



- 10 - 50 in/lb
- 6" Length

**718991 JTSD-1450K** | List \$275.85

**SALE \$159.95**

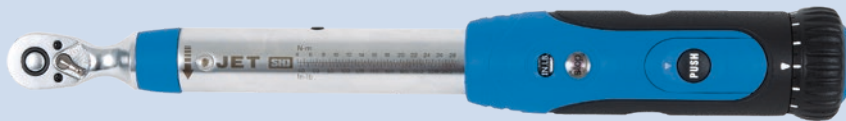
## Professional Adjustable Wrenches - Super Heavy Duty



- Ergonomic design
- All sizes CrV Steel!

PROD. NO.	MOD. NO.	Length	List	Sale
711132	AWP-6	6" (160 mm)	\$32.75	\$18.95
711133	AWP-8	8" (210 mm)	\$42.00	\$24.50
711134	AWP-10	10" (250 mm)	\$49.95	\$28.95
711135	AWP-12	12" (300 mm)	\$67.15	\$38.95
711136	AWP-15	15" (380 mm)	\$120.65	\$69.95
711137	AWP-18	18" (450 mm)	\$201.05	\$116.95
711139	AWP-24	24" (600 mm)	\$379.35	\$219.95

## JSHD Series Torque Wrenches - Super Heavy Duty



- Magnified view window shows torque value in numbers only - no scale lines to read!
- Lifetime tested to 3 x ISO standards



PROD. NO.	MOD. NO.	Drive	Torque Range	Length	List	Sale
718952	JSHD-14250	1/4"	50 - 250 in/lb	12-3/4"	\$298.30	\$172.95
718956	JSHD-3875	3/8"	15 - 75 ft/lb	15-3/4"	\$327.60	\$189.95
718961	JSHD-12150	1/2"	30 - 150 ft/lb	20-3/8"	\$332.75	\$192.95
718962	JSHD-12250	1/2"	50 - 250 ft/lb	24-1/2"	\$420.80	\$243.95

## 22 PC SAE/Metric Ball Nose Hex Key Set



- 0.05 - 3/8", 1.5 - 10 mm
- CrV Steel

**775164 JBHK-22SM** | List \$55.10

**SALE \$31.95**

## Hex Key Wrenches - Sets



- 775175: 1/16 - 3/8"
- 775185: 1.5 - 10 mm
- S2 Steel

PROD. NO.	MOD. NO.	Standard	List	Sale
775175	JBHK-9XL	SAE	\$51.65	\$29.95
775185	JBHK-9XLM	Metric	\$51.65	\$29.95

## 3/4" DR 1,850 ft/lb Torque Multiplier Kit



- Kit includes straight and 90° reaction bars with reaction base

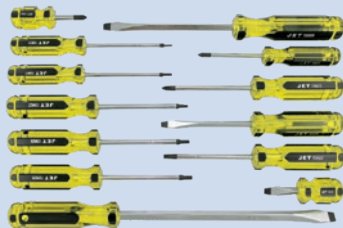
**719075 JTM-71850** | List \$1,476.15

**SALE \$855.90**

See cover page for our  
**NEW Industrial Series  
Torque Wrenches!**



## 13 PC Jumbo Handle Mechanic's Screwdriver Set



- CrV shafts
- Blow mould case

**720574 JHMSS-13** | List \$149.95

**SALE \$86.95**

## 9 PC Ergonomic Screwdriver Set



- 3/16 x 3", 1/4 x 4", 5/16 x 6"

**720523 JSTD-9S** | List \$109.95

**SALE \$63.75**

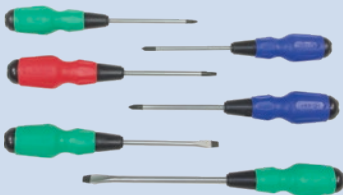
## 14 PC Cushion Grip Screwdriver Set

- Patented SVCM tool steel is up to 30% stronger than CrV screwdrivers
- Integrated cushion grips provide all day comfort and increase torque
- Slot stubby round shank 1/4" x 1-1/2"
- Slot square shank 1/4" x 4", 5/16" x 6", 3/8" x 8"
- Cabinet tip 3/16" x 3", 3/16" x 6"
- Phillips #1 x 3", #2 x 1-1/2", #2 x 4", #3 x 6"
- Square #1 x 4", #2 x 1-1/2", #2 x 4", #3 x 4"

**720566 JKS-14S** | List \$219.95

**SALE \$127.55**

## 6 PC TORQUE DRIVE® Screwdriver Set

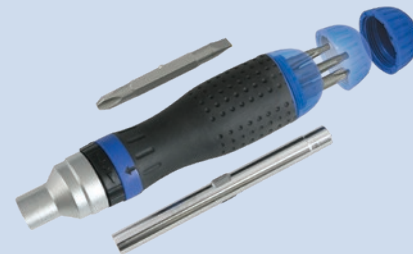


- Slot: 1/4 x 4", 5/16 x 6"
- Phillips: #1 x 4", #2 x 4"
- Square: #1 x 4", #2 x 4"
- Go thru shafts
- Ergonomic handles for non slip grip

**720508 TDSS-6** | List \$66.60

**SALE \$38.60**

## 19 PC Ratcheting Screwdriver Set

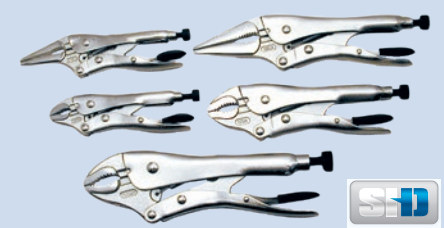


- 8 double-ended screwdriver bits and 3 nut drivers

**720590 JRSD-19** | List \$59.95

**SALE \$34.75**

## 5 PC Locking Pliers Set - Super Heavy Duty



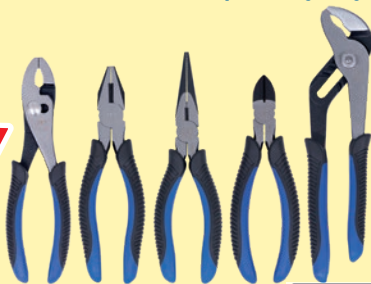
- Curved jaw: 5, 7, 10"
- Long nose: 6, 9"

**730335 LPS-5** | List \$155.15

**SALE \$89.95**

## 5 PC Industrial Pliers Set - Super Heavy Duty

**NEW!**



- For heavy duty industrial applications

**730306 JIPS-5SHD** | List \$155.15

**SALE \$89.95**

## 5 PC Pliers/Cutter Maintenance Set



- CrV steel

**730321 JPS-5** | List \$113.75

**SALE \$65.95**

## 10 PC VDE Tool Kit



- Individually tested and VDE certified for use on live circuits up to 1,000V
- Contains most commonly used VDE screwdrivers and pliers

**760002 JITK-10S** | List \$310.35

**SALE \$179.95**

## Pipe Wrenches



- Chrome Molybdenum hook and heel jaws for longest life and maximum grip

PROD. NO.	MOD. NO.	Length	List	Sale
710127	PW-18	18"	\$82.70	\$63.95
710130	PW-24	24"	\$129.30	\$99.95
710136	PW-36	36"	\$275.45	\$212.95

## Pipe Wrenches



- Chrome Molybdenum hook and heel jaws for longest life and maximum grip

PROD. NO.	MOD. NO.	Length	List	Sale
710227	PWA-18	18"	\$116.35	\$89.95
710230	PWA-24	24"	\$181.00	\$139.95
710236	PWA-36	36"	\$375.05	\$289.95

## Bolt Cutters - Super Heavy Duty



- Cuts material up to HRC48
- Induction hardened teeth

PROD. NO.	MOD. NO.	Length	List	Sale
731238	BCR-18	18"	\$77.55	\$59.95
731244	BCR-24	24"	\$103.40	\$79.95
731256	BCR-36	36"	\$193.95	\$149.95



## 1,500 Watt Professional Heat Gun



- 1,500 W variable heat
- 380001 JH GK-600** | List \$109.90

**SALE \$84.95**

## JSV Series Swivel Vises - Heavy Duty



- 360° swivel base with dual lock down handles

PROD. NO.	MOD. NO.	Jaw Width	List	Sale
320151	JSV-4HD	4"	\$155.15	<b>\$119.95</b>
320152	JSV-5HD	5"	\$206.90	<b>\$159.95</b>
320153	JSV-6HD	6"	\$258.65	<b>\$199.95</b>
320154	JSV-8HD	8"	\$388.00	<b>\$299.95</b>

## C-Clamps

- Drop forged for maximum strength
- Heavy duty swivel pads



PROD. NO.	MOD. NO.	Maximum Opening	List	Sale
390102	CC-2	2-3/16"	\$24.50	<b>\$18.95</b>
390103	CC-3	2-5/8"	\$42.60	<b>\$32.95</b>
390104	CC-4	4"	\$51.65	<b>\$39.95</b>
390105	CC-5	4-5/8"	\$74.95	<b>\$57.95</b>
390106	CC-6	6-1/4"	\$81.40	<b>\$62.95</b>
390108	CC-8	7-1/2"	\$116.35	<b>\$89.95</b>
390110	CC-10	9-1/2"	\$204.35	<b>\$157.95</b>
390112	CC-12	11-9/16"	\$245.70	<b>\$189.95</b>

## JVSG Series Iron Bench Vises - Super Heavy Duty



- Strongest cast vise on the market
- 80,000 PSI tensile strength SG iron



PROD. NO.	MOD. NO.	Jaw Width	List	Sale
320312	JVSG-4	4"	\$174.55	<b>\$134.95</b>
320313	JVSG-5	5"	\$245.70	<b>\$189.95</b>
320314	JVSG-6	6"	\$336.25	<b>\$259.95</b>
320315	JVSG-8	8"	\$478.50	<b>\$369.95</b>

## Bench Grinders



- Heavy duty construction for maximum service life
- All ball bearing construction
- Easy to adjust steel tool rests
- CSA electrics for safety and reliability
- Steel wheel covers with rear dust exhaust ports
- Eye shields and spark guards for operator safety
- Rubber feet on base for reduced vibration
- Includes coarse and medium grinding wheels

PROD. NO.	MOD. NO.	Motor	List	Sale
240153	BGC-6	1/3HP, 1Ph, 115V	\$258.10	<b>\$189.95</b>
240154	BGC-8	1/2HP, 1Ph, 115V	\$349.10	<b>\$256.95</b>

## 13-1/2" 3/4 HP 12 Speed Floor Drill Press

- 12 speed capability allows for a broad assortment of drilling applications
- Safety on/off switch with removable lock-out key
- Fully hinged belt and pulley cover and fully adjustable motor mount permit fast changes of spindle speed
- Worktable with quick release clamp rotates and tilts to 45° right and left



**200275 JDP-13F** | List \$868.20

**SALE \$639.00**

## All-Weather Pistol Grip Grease Gun - Heavy Duty



- Specially designed to outperform in cold weather
- 7,500 PSI; 1oz/40 strokes

**350165 JPPGG-14AW** | List \$69.20

**SALE \$39.95**

## Grease Gun Filler Pump



- Fits 25 – 50 lb/5 gallon pails
- Delivers 28 gms on 1 oz / stroke

**350158 JGFP-03** | List \$133.85

**SALE \$96.95**

## 9L Manual Fluid Extraction Pump

- Quickly and efficiently evacuates a multitude of fluids, including engine oil, transmission fluids, gear oil, coolant, and brake fluid



**350551 JM EP-9** | List \$180.10

**SALE \$129.95**

## 18 V Battery Operated Grease Gun - Heavy Duty



- Includes 2 long-life rechargeable 18V batteries and 1hr charger
- Complete with 42" high pressure flex hose and professional 4-jaw coupler
- Specs: 10,000 PSI; dispenses 2.4oz/min

**350166 JCGG18** | List \$443.40

**SALE \$299.95**

## 50 lb Air Operated Grease Pump Kit - Heavy Duty



- Pumps up to 1.76 lb per minute (27 oz)

**350306 JAGP-25** | List \$1,108.65

**SALE \$799.95**

## 18 US Gallon (68 Litre) Waste Oil Drain

- 68 litre steel recovery tank
- Adjustable bowl height from 46" to 75"



**350512 JOIDR68GD** | List \$387.95

**SALE \$279.95**

## 26" X 16" 6 Drawer Mechanic's Chest



- Ball bearing slides
- Extra heavy gauge steel for medium to heavy duty applications

**842653** MC2606D-BG | List \$519.00

**SALE \$382.00**

## 41" x 18" 14 Drawer B&G Series Mechanic's Chest

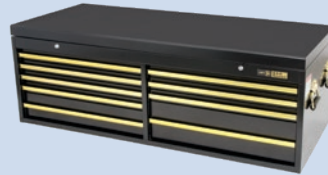


- Ball bearing slides
- Extra heavy gauge steel for medium to heavy duty applications

**842663** MC4114-BG | List \$1,168.40

**SALE \$859.95**

## 56" x 24" 9 Drawer B&G Series Mechanic's Chest



- Ball bearing slides
- Extra heavy gauge steel for medium to heavy duty applications

**842673** MC5609-BG | List \$1,847.75

**SALE \$1,359.95**

## 8" Square Tool Bag



- Two layers of premium quality 1680D polyester material for professional applications
- Reinforced with double stitching and steel rivets in all critical weight bearing areas for years of worry free use
- Tools not included!

**842011** JSTB-8 | List \$77.55

**SALE \$59.95**

## 27" x 18" 5 Drawer B&G Series Roller Cabinet



- Ball bearing slides
- Extra heavy gauge steel for medium to heavy duty applications

**842602** RC2705-BG | List \$774.40

**SALE \$569.95**

## 41" x 18" 10 Drawer B&G Series Roller Cabinet



- Ball bearing slides
- Extra heavy gauge steel for medium to heavy duty applications

**842613** RC4110-BG | List \$1,614.05

**SALE \$1,187.95**

## 56" x 24" 13 Drawer B&G Series Roller Cabinet



- Ball bearing slides
- Extra heavy gauge steel for medium to heavy duty applications

**842623** RC5613-BG | List \$2,850.55

**SALE \$2,098.00**

## 45 Pocket Bucket Organizer



- Premium quality 1680D polyester material for professional applications
- Turns any 5 gallon bucket into a heavy duty tool organizer
- Bucket and tools not included

**842096** JBO-45 | List \$31.00

**SALE \$23.95**

## 100 Amp Analogue Load Tester



- Tests 6 and 12 volt batteries up to 1,000 CCA
- Load capacity: 100AMP

**H3432** | List \$94.45

**SALE \$54.75**

## Heavy Duty Strap Filter Wrench



- Fits filters up to 9" (228 mm) diameter
- Designed for high torque requirements of truck and heavy equipment filters
- Use with 3/8" or 1/2" drive ratchet or breaker bar

**H3241** | List \$79.50

**SALE \$46.10**

## Ford® Triton Spark Plug Thread Repair Kit



- Designed to aide in repairing spark plug threads damaged on Ford Triton Modular Engines - 1996-2003 - 4.6LT, 5.4LT, 6.8LT V-10
- Becoming one of the most asked for repairs as these engines age

**H3660** | List \$1,051.95

**SALE \$609.95**

## 5 PC Screw Extractor Set



- Chrome Molybdenum steel

**H1273** | List \$49.95

**SALE \$28.95**



**SMD/COB Headlamp**

**NEW!**



- Combination SMD and COB technology for long distance or wide angle lighting
- Cree XPG SMD provides the ultimate in long distance lighting
- Both light sources feature Low, High, Strobe, and Variable functions
- Hold down either power button to precisely adjust light level to suit your task

**849822** JLHL-250 | List \$36.15

**SALE**

**\$27.95**

**Rechargeable SMD/COB Headlamp**

**NEW!**



- Combination SMD and COB technology for long distance or wide angle lighting
- Lithium-Ion battery is USB chargeable using any compatible charging block
- Cree XPG SMD provides the ultimate in long distance lighting
- Both light sources feature Low, High, Strobe, and Variable functions

**849823** JUHL-250 | List \$51.65

**SALE**

**\$39.95**

**COB Headlamp**

**NEW!**



- COB technology for wide angle and close up work
- High, Low, and Strobe functions
- IP54 rated for outdoor use

**849824** JLHL-150 | List \$25.80

**SALE**

**\$19.95**

**COB Pivot Light**

**NEW!**



- Combination COB and SMD technology for use as a work light or flashlight
- Lithium-Ion battery is USB chargeable using any compatible charging block
- Pivot base with integrated magnet allows light to stand on any surface or be mounted to any metal surface
- Combination suspension hook and belt hook for mounting light or conveniently attaching to your belt

**849854** JUPL-240 | List \$64.60

**SALE**

**\$49.95**

**COB Work Light with UV Detection**

**NEW!**



- Combination COB and UV technology for use as a work light or leak detection light
- Lithium-Ion battery is USB chargeable using any compatible charging block
- Ultra-thin wand gets light into the tightest spaces
- Wand rotates 180° and locks in 8 positions to put the light where you need it

**849855** JUFL-230UV | List \$77.55

**SALE**

**\$59.95**

**Folding COB Work Light**

**NEW!**



- Combination COB and SMD technology for use as a work light or flashlight
- Lithium-Ion battery is USB chargeable using any compatible charging block
- Ultra-thin wand gets light into the tightest spaces
- Wand moves 180° and rotates 270° to put the light where you need it

**849856** JUFL-500 | List \$116.35

**SALE**

**\$89.95**

**LED Flashlight - 600 Lumens - with USB charger**



- SMD Technology
- Up to 100,000 hours lifetime

**849819** JLFL-600U | List \$81.40

**SALE**

**\$62.95**

**High Performance LED Light Bar**

**NEW!**



- Super robust light built for the toughest job sites
- Up to 100,000 hours lifetime
- 7.4V 5200mAh Lithium ion battery for long run times and long life
- Works on or off the cord for maximum versatility and unlimited run time

**849840** JALB-2000 | List \$310.40

**SALE**

**\$239.95**

**14 Gauge ABS Cord Reel (45 ft)**



- 3 grounded outlets
- 14/3 45' SJTOW cord

**849876** JPCR-1450 | List \$206.90

**SALE**

**\$159.95**

**Contractor Grade Extension Cords - Tri-Tap**



- SJTOW cord rated to -50°C
- Light indicates live power

PROD. NO.	MOD. NO.	Cord Length	List	Sale
849881	JLEC-1425	25'	\$34.30	\$26.50
849882	JLEC-1450	50'	\$58.15	\$44.95
849884	JLEC-14100	100'	\$109.90	\$84.95
849886	JLEC-1225	25'	\$46.25	\$35.75
849887	JLEC-1250	50'	\$86.00	\$66.50
849889	JLEC-12100	100'	\$165.50	\$127.95

**LED Worklight - 420 Lumens**



- SMD Technology
- Up to 100,000 hours lifetime

**849835** JLWL-66 | List \$94.35

**SALE**

**\$72.95**

**LED Worklight - 600 Lumens**



- SMD Technology
- Up to 100,000 hours lifetime

**849837** JLWL-90 | List \$124.10

**SALE**

**\$95.95**



# PROFESSIONAL PRODUCTS - VALUE BY DESIGN

## 40 PC 1/4" Drive SAE / Metric Socket Set



- Chrome Vanadium steel
- 5-1/2" quick release ratchet
- Shallow and Deep: 3/16 – 1/2"
- Shallow and Deep: 4 – 12 mm

020113 ISK-1440SM | List \$83.10

**SALE \$59.95**

## 20 PC 3/8" Drive SAE Socket Set



- 8" Quick release ratchet
- Regular: 3/8 – 3/4"
- Deep: 3/8 – 13/16"

020123 ISK-3820S | List \$96.95

**SALE \$69.95**

## 20 PC 3/8" Drive Metric Socket Set



- 8" quick release ratchet
- Regular: 10 – 22 mm
- Deep: 10 – 19 mm

020124 ISK-3820M | List \$96.95

**SALE \$69.95**

## 20 PC 1/2" Drive SAE Socket Set



- 10" quick release ratchet
- Regular: 3/8 – 1-1/4"

020133 ISK-1220S | List \$152.40

**SALE \$109.95**

## 49 PC 3/8" Drive SAE / Metric Socket Set



- 8" quick release ratchet
- Regular: 3/8 – 7/8", 6 – 19 mm
- Deep: 3/8 – 7/8", 8 – 19 mm

020125 ISK-3849SM | List \$152.40

**SALE \$109.95**

## 21 PC 3/4" Drive SAE Socket Set



- 20" round head ratchet
- Regular 3/4 – 2"
- 12 pt Sockets

020141 ISK-3421 | List \$360.25

**SALE \$259.95**

## 24 PC 1/2" Drive Metric Socket Set



- 10" quick release ratchet
- Regular: 10 – 32 mm

020134 ISK-1224M | List \$152.40

**SALE \$109.95**

## 49 PC 1/2" Drive SAE / Metric Socket Set



- 10" quick release ratchet
- Regular: 3/8 – 1-1/4", 10 – 32 mm
- Deep: 9/16 – 7/8", 13 – 22 mm

020135 ISK-1249SM | List \$263.25

**SALE \$189.95**

## Oval Head Ratchet Wrenches



- All components forged from superior quality Chrome Vanadium steel
- Push button quick release holds socket securely

PROD. NO.	MOD. NO.	Drive	List	SALE
025195	IRH-14	1/4"	\$22.45	\$15.95
025395	IRH-38	3/8"	\$30.00	\$21.95
025595	IRH-12	1/2"	\$37.50	\$26.95

## 1/2" Drive 13 PC Deep SAE Impact Socket Set



- Heat treated Chrome Molybdenum sockets for professional applications
- Torque-Drive® sockets apply torque to flats of fasteners to prevent corner rounding and increase torque
- Black phosphate finish resists corrosion and will not peel

020728 IPS-1312D | List \$120.50

**SALE \$86.95**

## 1/2" Drive 13 PC Deep Metric Impact Socket Set



- Heat treated Chrome Molybdenum sockets for professional applications
- Torque-Drive® sockets apply torque to flats of fasteners to prevent corner rounding and increase torque
- Black phosphate finish resists corrosion and will not peel

020736 IPS-1312DM | List \$109.40

**SALE \$78.95**

## 1/2" Drive Air Impact Wrench



- Single Hammer
- 230 ft/lb

028212 I|50S | List \$79.90

**SALE \$39.95**



## 10 PC Jumbo Combination Wrench Sets



- Industrial Quality Drop Forged Chrome Vanadium Steel
- 020202: 1-5/16 – 2"
- 020203: 33 – 50 mm

PROD. NO.	MOD. NO.	Standard	List	Sale
020202	ICWJ-10S	SAE	\$277.10	<b>\$199.95</b>
020203	ICWJ-10M	Metric	\$277.10	<b>\$199.95</b>

## 16 PC Combination Wrench Sets



- Raised panel style
- 020215: 1/4 – 1-1/4"
- 020216: 6 – 32 mm

PROD. NO.	MOD. NO.	Standard	List	Sale
020215	ICW-16	SAE	\$83.10	<b>\$59.95</b>
020216	ICW-16M	Metric	\$83.10	<b>\$59.95</b>

## 22 PC Fully Polished SAE / Metric Combination Wrench Set



- Chrome Vanadium steel
  - Full mirror polish finish
  - 1/4" – 7/8", 8 – 19 mm
- 020219** ICWP-22SM | List \$67.85

**SALE \$41.95**

## 3 PC Aviation / Tin Snips Set



- Serrated blades
- 020802** IAS-3S | List \$34.60

**SALE \$24.95**

## Bolt Cutters



- Hardened blades

PROD. NO.	MOD. NO.	Length	List	Sale
020504	IBC-18	18"	\$33.20	<b>\$23.95</b>
020505	IBC-24	24"	\$41.50	<b>\$29.95</b>
020506	IBC-36	36"	\$81.70	<b>\$58.95</b>

## 1/2" Drive Torque Wrench



- Click type
  - 10 – 150 ft/lb
- 021811** ITW-2063 | List \$99.70

**SALE \$71.95**

## 14 PC SAE Angle Wrench Set - 60° & 15°

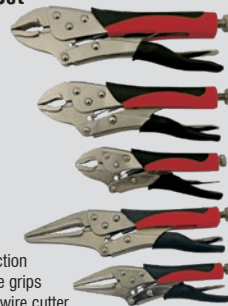


- Fully polished mirror finish
- 3/8" – 1-1/4"
- 60° & 15°

**020222** IACW-14 | List \$145.45

**SALE \$104.95**

## 5 PC Locking Pliers Set



- Tough alloy steel construction
- Comfortable rubber handle grips
- All models complete with wire cutter

**020608** ILPS-5C | List \$54.00

**SALE \$38.95**

## 5 PC Cushion Grip Pliers Set



- Cushion-grip handles
- 020604** IPL-5S | List \$49.95

**SALE \$36.05**

## 14 PC Ergonomic Screwdriver Set



- Chrome Vanadium steel shafts
- Comfortable ABS handles
- 3 x Phillips
- 3 x Square
- 5 x Slot
- 3 x TORX®

**020907** IESD-14S | List \$54.00

**SALE \$38.95**

## 14 PC SAE / Metric Ball Nose Hex Key Set



- Chrome Vanadium
- 1/8 – 3/8", 2.5 – 10 mm

**021515** IHKB-14SM | List \$18.70

**SALE \$13.50**

## Steel Pipe Wrenches

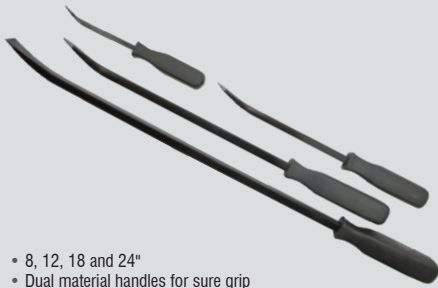


- Forged carbon steel hook jaw

PROD. NO.	MOD. NO.	Length	List	Sale
020402	IPW-10	10"	\$15.20	<b>\$10.95</b>
020404	IPW-14	14"	\$20.70	<b>\$14.95</b>
020405	IPW-18	18"	\$33.95	<b>\$24.50</b>
020406	IPW-24	24"	\$46.95	<b>\$33.90</b>
020407	IPW-36	36"	\$83.10	<b>\$59.95</b>



## 4 PC Pry Bar Set



- 8, 12, 18 and 24"
- Dual material handles for sure grip

**022925** IMPB-4 | List \$52.60

**SALE**

**\$37.95**

## Swivel Base Mechanic's Vises

- Lightweight vise cast from 30,000 psi tensile strength iron
- 360° swivel base with dual lock down handles



PROD. NO.	MOD. NO.	Jaw Width	List	Sale
<b>024724</b>	ISVL-4	4"	\$123.25	<b>\$88.95</b>
<b>024726</b>	ISVL-6	6"	\$217.50	<b>\$156.95</b>
<b>024728</b>	ISVL-8	8"	\$299.30	<b>\$215.95</b>

## 1" x 15' 1,500 lb Ratchet Tie Down Set



- Heavy duty weather resistant polyester web
- Rated capacity 1,500 lb

**027116** ITD-1154R | List \$46.85

**SUPER SPECIAL**

**SALE**

**\$29.95**

## 7" Variable Speed Polisher



**SUPER SPECIAL**

- 10 Amp 120V motor
- 1,000 - 3,000 rpm no load speed with thumbwheel selector

**011713** IPT-700V | List \$184.80

**SALE**

**\$126.95**

## 5,500 lb Hydraulic Pallet Truck



- 27" x 48" fork dimensions
- Heavy duty pump for long life

**024852** IPT-55A | List \$692.85

**SALE**

**\$499.95**

## 2" x 30' 10,000 lb Ratchet Tie Down



- Heavy-duty weather resistant polyester web
- Rated capacity 10,000 lb

**027108** RTD-230 | List \$80.30

**SALE**

**\$57.95**

## 13 PC Slide Hammer Puller Set



- Pulls dents, gears and axles

**027405** ISHK-13 | List \$180.10

**SALE**

**\$129.95**

## 2 Ton Ratchet Cable Puller



- 4,000 lb pulling capacity
- All steel construction

**024903** ICP-200 | List \$45.65

**SALE**

**\$32.95**

## 3 Ton Hydraulic Service Jack



- Conforms to ANSI standards
- Lifting Range: 5-1/2" - 19-1/2"

**024827** ISJ-3 | List \$289.00

**SALE**

**\$208.95**

## 2 PC Telescoping Magnetic Tool and Mirror Set



- Cushion grip

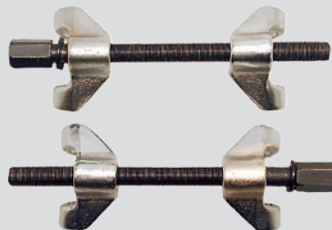
- Includes:
- Telescoping Magnetic Tool (027292): Capacity: 3.5 lb
    - Extends 6-1/4" to 33-1/4"
  - Telescoping Mirror (029293): Diameter: 2-1/4"
    - Extends 9-3/4" to 36-1/2"

**027294** ITT-2S | List \$23.20

**SALE**

**\$16.75**

## Macpherson Strut Coil Spring Compressor Set

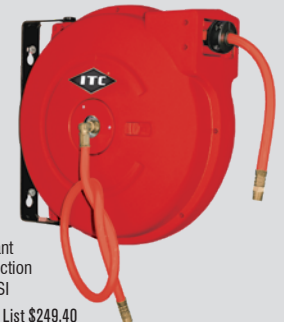


**027255** ISC-200 | List \$70.60

**SALE**

**\$49.95**

## 3/8" x 50' Retractable Air Hose Reel - Polypropylene



- Durable impact resistant polypropylene construction
- Max. Pressure: 300 PSI

**028281** IAW3850 | List \$249.40

**SALE**

**\$179.95**

### Lever Chain Pullers



- Top and bottom safety hooks
- Grade 80 load chain

PROD. NO.	MOD. NO.	Rated Lifting Capacity (Tons)	Standard Lift	Number of Falls	List	Sale
110302	VLP-75	3/4	5'	1	\$263.25	<b>\$179.95</b>
110303	VLP-150	1-1/2	5'	1	\$360.25	<b>\$244.95</b>
110306	VLP-75-10	3/4	10'	1	\$304.80	<b>\$189.95</b>
110307	VLP-150-10	1-1/2	10'	1	\$415.70	<b>\$259.95</b>

### Beam Clamps



- Adjustable to fit securely on a wide range of flange and beam widths
- Meets ANSI B30.11 specifications (certificate included)

PROD. NO.	MOD. NO.	Capacity (Tons)	Rated Capacity (lb)	Rated Flange Width	List	Sale
120613	VBC-1	1	2,200	2-61/64" to 8-21/32"	\$85.85	<b>\$61.95</b>
120615	VBC-2	2	4,400	2-61/64" to 8-21/32"	\$89.95	<b>\$64.90</b>
120616	VBC-3	3	6,600	3-5/32" to 12-39/64"	\$149.95	<b>\$108.20</b>

### Plate Clamps



**NEW LOW PRICE!**

- Tested to 200% of rated capacity

PROD. NO.	MOD. NO.	Rated Lifting Capacity (Tons)	Jaw Opening	Suspension Eye Opening	List	Sale
109322	SPCU-50	1/2	0 - 19/32"	2"	\$159.00	<b>\$114.95</b>
109323	SPCU-100	1	0 - 13/16"	2-1/4"	\$239.00	<b>\$169.95</b>
109325	SPCU-200	2	0 - 1"	2-3/8"	\$317.35	<b>\$229.95</b>

### Wire Rope Pullers



**NEW LOW PRICE!**

- Lightweight, simple and safe to operate
- May be used in any position to lift, pull, lower, or stretch heavy loads

PROD. NO.	MOD. NO.	Rated Lifting Capacity (Tons)	Rated Lifting Capacity (lb)	Rated Pulling Capacity (Tons)	List	Sale
111136	SGP-75A	3/4	1,760	1.4	\$554.30	<b>\$399.95</b>
111137	SGP-150A	1-1/2	3,520	2.8	\$679.00	<b>\$489.95</b>

### Generators

PROD. NO.	MOD. NO.	Generator	Engine	Starter	Sale
291102	JGE4200	4,200 watts	223 cc JET	Recoil	<b>\$799.00</b>
291103	JGE6500E	6,500 watts	389 cc JET	Electric	<b>\$1,337.95</b>
291105	JGE9000E	9,000 watts	420 cc JET	Electric	<b>\$1,533.65</b>
291109	JIN3500E	3,500 watts	212 cc	Electric	<b>\$1,599.00</b>



### Cut-Off Wheels (for Angle Grinders)

**SUPER SPECIAL**

**Type 1**


- Designed for high performance cutting of steel and stainless steel materials
- Made from highly refined ingredients; these Fe+S+Cl free wheels are specially formulated for cutting steel and contamination/burn free cutting of all stainless steels

PROD. NO.	Size (inches)	Thickness (mm)	Thickness (inches)	List	Sale
501521	4-1/2 x 3/64 x 7/8	1.2	0.045	\$3.15	\$1.95
501526	5 x 3/64 x 7/8	1.2	0.045	\$3.30	\$2.05
501531	6 x 3/64 x 7/8	1.2	0.045	\$4.70	\$2.95

### Depressed Centre Cutting/Grinding Wheels (for Angle Grinders)


**TYPE 27**


- Specially designed dual purpose wheels for high performance cutting and light grinding of both steel and stainless steel materials
- Ideal for notching, root pass cleaning, chamfering, deburring and much more

PROD. NO.	Size (inches)	Grade	Max. RPM	List	Sale
501653	4-1/2 x 5/64 x 7/8	A46PX-DUO	13,300	\$4.75	\$3.45
501656	5 x 5/64 x 7/8	A46PX-DUO	12,200	\$5.10	\$3.70

### Depressed Centre Grinding Wheels (for Angle Grinders)


**TYPE 27**


- Specially formulated for high performance grinding in a wide range of steel grinding operations
- Made with high quality abrasive grains for faster grinding results with less effort

PROD. NO.	Size (inches)	Grade	Max. RPM	List	Sale
500418	4-1/2 x 1/4 x 7/8	A24R	13,300	\$4.40	\$3.15
500428	5 x 1/4 x 7/8	A24R	12,200	\$4.75	\$3.45
500432	6 x 1/4 x 7/8	A24R	10,200	\$6.55	\$4.75

### POWERBLEND EDG Curved Edge Flap Discs - Super High Performance (for Angle Grinders)



- New POWERBLEND EDG Super High Performance flap discs are folded upwards at a 90° angle to achieve optimal results in grinding fillet welds, corners, and other hard to reach places
- Made from specially formulated ceramic grains that are designed to stay sharp, ensuring faster stock removal rates and longer wheel life
- Fillet and corner grinding MADE EASY

PROD. NO.	Grit	Max. RPM	Type	List	Sale
503865	CG60	13300	27	\$19.60	\$14.15
503875	CG60	12200	27	\$21.10	\$15.25

### POWERBLEND TRM QC Flap Discs (for Angle Grinders)

- Zirconia grain flaps for fast, cool cutting and extra-long life on steel and stainless steel
- The 5/8-11 "Quick Change" arbor increases productivity by reducing time spent on wheel change outs
- Trimable backing pad for extended disc life

PROD. NO.	Grit	Max. RPM	Type	List	Sale
503563	Z40	13,300	27	\$11.35	\$8.20
503565	Z60	13,300	27	\$11.35	\$8.20
503567	Z80	13,300	27	\$11.35	\$8.20
503569	Z120	13,300	27	\$11.35	\$8.20
503573	Z40	12,200	27	\$13.50	\$9.75
503575	Z60	12,200	27	\$13.50	\$9.75
503577	Z80	12,200	27	\$13.50	\$9.75
503579	Z120	12200	27	\$13.50	\$9.75

**5/8-11 "Quick Change" arbor**

**TYPE 27**



## 3 x 5/8-11NC Crimped Cup Brush



- JET crimped wire cup brushes are made with quality piano wire (tempered high carbon steel) for fast brushing action and maximum life
- Designed for surface cleaning, rust and paint removal, and light deburring on large flat surfaces

554100 CC318T | List \$15.75

**SALE \$11.35**

## 3 x 5/8-11NC Knot Twisted Cup Brush - High Performance



- Used on angle grinders for heavy duty cleaning, weld and scale removal, deburring and general heavy duty brush work

554203 CK3201T | List \$19.35

**SALE \$13.95**

## 2-3/4 x 5/8-11NC Knot Banded Cup Brush



- JET knot banded wire cup brushes are similar to a regular knot style cup brush but have the added feature of a band or knock-off ring

553605 CKB2201T | List \$27.65

**SALE \$18.50**

## Stringer Bead Brushes - High Performance (for Angle Grinders)

**NEW!**



- Specifically designed for root and hot pass weld cleaning in pipe joining applications
- Stringer bead brushes can also be used wherever a controlled, aggressive brushing action is required on confined surface contact areas

PROD. NO.	Diameter	Arbor Hole	List	Sale
553488	4-1/2"	5/8-11NC	\$25.50	\$17.95
553492	5"	5/8-11NC	\$28.10	\$20.68
553496	6"	5/8-11NC	\$31.25	\$22.95

## Knot Banded Cup Brushes - High Performance (for Angle Grinders)

**NEW!**



- JET knot banded wire cup brushes are similar to a regular knot style cup brush but have the added feature of a band or knock-off ring

PROD. NO.	Diameter	Arbor Hole	List	Sale
553665	4-1/2"	5/8-11NC	\$39.50	\$28.95
553667	5"	5/8-11NC	\$44.30	\$31.95

## Knot Twisted Conical Bevel Brushes - High Performance (for Angle Grinders)

**NEW!**



- High speed knotted conical brushes are ideal for heavy clean-up of weld spatter, slag, rust paint and scale in hard-to-reach areas

PROD. NO.	Diameter	Arbor Hole	List	Sale
554359	4-1/2"	5/8-11NC	\$33.20	\$24.95
554361	5"	5/8-11NC	\$35.95	\$26.95

## 3/4 x 1/4" Crimped End Brushes - High Performance (for Drills and Die Grinders)

- Made from high quality crimped wire for increased life and performance
- Mounted on 1/4" shafts, these brushes are suitable for use on drills and/or die grinders



PROD. NO.	Wire Diameter	Diameter	Arbor Hole	List	Sale
553714	0.014	3/4"	1/4"	\$12.95	\$9.35
553764	0.01	3/4"	1/4"	\$15.20	\$11.19

## 1 x 1/4" Crimped End Brushes - High Performance (for Drills and Die Grinders)

- Made from high quality crimped wire for increased life and performance
- Mounted on 1/4" shafts, these brushes are suitable for use on drills and/or die grinders



PROD. NO.	Wire Diameter	Diameter	Arbor Hole	List	Sale
553716	0.014	1"	1/4"	\$14.75	\$10.65
553766	0.01	1"	1/4"	\$16.55	\$12.19

## Crimped Radial Brushes - High Performance (for Drills and Die Grinders)

- Made from high quality crimped wire for increased life and performance
- Mounted on 1/4" shafts, these brushes are suitable for use on drills and/or die grinders



PROD. NO.	Wire Diameter	Diameter	Arbor Hole	List	Sale
553733	0.014	2"	1/4"	\$14.75	\$10.65
553735	0.014	3"	1/4"	\$15.95	\$11.50
553783	0.012	2"	1/4"	\$16.55	\$12.19
553785	0.012	3"	1/4"	\$17.55	\$12.95

## 1" Drive "Ultra Lightweight" Impact Wrenches - Heavy Duty



- Produces an incredible 1,800 ft/lb of nut wrenching torque in reverse
- Ultimate power in reverse maximizes removal of stubborn rusted nuts
- Unheard of power to weight performance
- Ultra lightweight "Back Saver Technology" ensures maximum operator comfort and safety, and minimum fatigue during use

PROD. NO.	MOD. NO.	Anvil Size	Max. Torque (ft/lb)	List	Sale
400426	AW25LHD2	1" x 2"	1,500	\$1,305.75	<b>\$896.95</b>
400427	AW25LHD6	1" x 6"	1,500	\$1,339.20	<b>\$919.95</b>

## 1" Drive "Lightweight" Impact Wrenches - Super Heavy Duty



- Produces an incredible 2,100 ft/lb of nut wrenching torque in reverse
- Ultimate power in reverse maximizes removal of stubborn rusted nuts
- Unheard of power to weight performance – compare traditional models at over 30 pounds
- Lightweight "Back Saver Technology" ensures maximum operator comfort and safety, and minimum fatigue during use

PROD. NO.	MOD. NO.	Anvil Size	Max. Torque (ft/lb)	List	Sale
400443	AW25ASD2	1" x 2"	1,800	\$1,149.00	<b>\$689.95</b>
400444	AW25ASD6	1" x 6"	1,800	\$1,164.50	<b>\$699.95</b>

## 1" Drive D-Handle Impact Wrenches



- Produces 1,900 ft/lb of hard hitting torque
- Rocking dog Hammer mechanism for power and durability
- 6" extended anvil to access lug nuts in truck and tractor wheels

PROD. NO.	MOD. NO.	Anvil Size	Max. Torque (ft/lb)	List	Sale
400455	AW25AD2	1" x 2"	1,900	\$713.25	<b>\$489.95</b>
400456	AW25AD6	1" x 6"	1,900	\$727.80	<b>\$499.95</b>

## Angle Grinders



- Lightweight and compact design
- 11,000 RPM

PROD. NO.	MOD. NO.	Wheel Diameter	Spindle Thread	List	Sale
402304	AG40L	4"	10 mm x 1.25"	\$320.20	<b>\$219.95</b>
402305	AG50L	5"	10 mm x 1.25"	\$327.45	<b>\$224.95</b>

## 7" Angle Grinder - Super Heavy Duty



- Powerful 1.2 horsepower angle grinder for heavy duty applications
- Lightweight and compact design with new moulded handle grip
- 7,800 RPM

402332 AG70SD | List \$946.15

**SALE \$649.95**

## .6 HP 1/4" Mini Die Grinder - Heavy Duty



- Front exhaust, compact motor housing – only 5-3/4" long!

402114 MG1HD | List \$152.40

**SALE \$109.95**

## .9 HP 1/4" Die Grinder - Heavy Duty



- Front exhaust, compact motor housing – only 6-1/2" long!

402123 MG19HD | List \$263.25

**SALE \$189.95**

## .6 HP 1/4" 3" Extended Die Grinder - Heavy Duty



- Front exhaust, compact motor housing
- Motor shaft features ball bearings front and back, and motor end plates are made from durable die cast aluminum metal for maximum life and performance

402121 MG3HDE | List \$263.25

**SALE \$189.95**

## .6 HP 1/4" 90° Angle Head Die Grinder - Heavy Duty



- Rear exhaust, compact motor housing
- New improved drive gear system for longer life in heavy applications

402113 MG90HD | List \$332.55

**SALE \$239.95**

## 1/2" Composite Impact Wrench - Super Heavy Duty



- Specially treated anvil for long service life
- Internal one piece construction reduces power loss
- Produces 780 ft/lb of nut wrenching torque in reverse

400242 AW500C | List \$298.85



**SALE \$199.95**

## 1/2" Drive Composite Series Mini Impact Wrench - Heavy Duty

- Produces 300 ft/lb of torque in reverse
- Ultimate power in reverse maximizes removal of stubborn rusted nuts
- Super strong state-of-the-art mini composite body allows access into tight spaces
- Incredibly lightweight – only 2.6 lb

400226 AW500CCQ | List \$378.40



**SALE \$259.95**

## 1/2" Drive Magnesium Series Impact Wrench - Super Heavy Duty



- Produces 600 ft/lb of nut wrenching torque in reverse
- Ultimate power in reverse maximizes removal of stubborn rusted nuts
- Super strong magnesium body
- Weighs only 5.8 lb

400245 AW500MSD | List \$349.30



**SALE \$239.95**

## 3/4" Drive Magnesium Series Impact Wrench - Super Heavy Duty



- Produces 1,200 ft/lb of nut wrenching torque in reverse
- Ultimate power in reverse maximizes removal of stubborn rusted nuts
- Super strong magnesium body
- Incredibly lightweight – only 11.3 lb

400313 AW19MSD | List \$763.45



**SALE \$524.45**

## 1/2" Drive Impact Wrench - Heavy Duty

- Produces 550 ft/lb of hard hitting torque
- Weighs only 5.7 lb
- Twin Hammer mechanism provides more power and smooth, balanced impact blows for reduced vibration

400252 AW50AT | List \$232.85



**SALE \$159.95**

## 1/2" Drive Angled Impact Wrench - Heavy Duty

- 200 ft/lb hard hitting torque for the hard to reach places
- Patented cooling / lubrication system to reduce excessive heat and increase the life
- Reinforced aluminum alloy die cast head with steel retaining nut for durability
- Patented exhaust mechanism uses a built in twin chamber to reduce exhaust noise without losing power

400261 AW500AIWHD | List \$606.95



**SALE \$416.95**

## 3 PC Air Filter, Regulator and Lubricator 1/2" NPT - Standard

- Filters: Clean air maximizes tool life, reduces repair and replacement costs, minimizes downtime
- Regulators: Controlled air flow maximizes tool performance and shop productivity
- Lubricators: Proper lubrication maximizes tool performance, life and shop productivity

408856 AFRLMS12 | List \$311.75



**SALE \$224.95**

## 2 PC Air Filter, Regulator and Lubricator 1/2" NPT - Standard

- Filters: Clean air maximizes tool life, reduces repair and replacement costs, minimizes downtime
- Regulators: Controlled air flow maximizes tool performance and shop productivity
- Lubricators: Proper lubrication maximizes tool performance, life and shop productivity

408804 AFRLCS12 | List \$304.80



**SALE \$219.95**

## Air Filter Regulator Combination 1/2" NPT - Standard

- Filters: Clean air maximizes tool life, reduces repair and replacement costs, minimizes downtime
- Regulators: Controlled air flow maximizes tool performance and shop productivity
- Lubricators: Proper lubrication maximizes tool performance, life and shop productivity

408885 AFRS12 | List \$138.50



**SALE \$99.95**

## 3/8" Drive Ratchet Wrench - Heavy Duty

- This professional quality, heavy duty ratchet wrench features a high performance five blade motor, producing 70 ft/lb of torque - our most powerful ratchet wrench

400109 RW375HD | List \$251.75



**SALE \$172.95**

## 1/2" Drive Ratchet Wrench - Heavy Duty

- Most powerful ratchet wrench
- 360° swivel air inlet prevents twists in the hose
- Maximum torque: 70 ft/lb

400214 RW500HD | List \$251.75



**SALE \$172.95**

## 1/4" Drive Mini Ratchet Wrench - Heavy Duty

- Our most powerful and compact 1/4" mini ratchet
- Slim profile head ideal for engine compartment and under-dash work
- Maximum torque: 25 ft/lb

400007 RW25HDM | List \$232.85



**SALE \$159.95**

**Floor/Garage Jacks - Hydraulic**



- 962DL & 963DL: Low Profile – 75 mm (2.95")
- 2xP – Double Pump design for fast efficient lifting
- Superior grade "soft" components for better performance in increased jack life

PROD. NO.	MOD. NO.	Cap. (Tons)	List	Sale
030404	962DL	2	\$436.65	<b>\$299.95</b>
030405	963DL	3	\$553.10	<b>\$379.95</b>
030417	953D	3	\$349.30	<b>\$219.95</b>
030408	964D	4	\$582.20	<b>\$399.95</b>

**3-1/2 Ton Service Jack - Heavy Duty**



- Low Height: 4", High Height: 19-1/2"
- Flanged side plates for increased strength and stability

**030406** 965GTO | List \$553.10

**SALE \$379.95**

**2 Ton Aluminum Racing Jack**



- Lightweight, only 43 lb (19.5 kg) and a 2 Ton Capacity makes this a very versatile jack for numerous applications from towing and service vehicle applications, general garage service to the racers of all types

**030412** 962AL | List \$553.10

**SALE \$379.95**

**Floor Truck Jacks - Hydraulic**



- Automatic safety valve prevents overload
- Heavy duty swivel casters provide optimum maneuverability

PROD. NO.	MOD. NO.	Cap. (Tons)	List	Sale
030436	957	10	\$1,885.20	<b>\$1,295.00</b>
030438	970SD	20	\$5,087.85	<b>\$3,495.00</b>

**Truck Axle Air/Hydraulic Jacks**



PROD. NO.	MOD. NO.	Cap. (Tons)	List	Sale
030470	727	22	\$869.10	<b>\$597.00</b>
030445	728C	20	\$1,310.10	<b>\$899.95</b>
030450	722SHD	20	\$1,688.60	<b>\$1,159.95</b>

**Low Profile Truck Jacks**



- Designed for light to medium truck transmissions

PROD. NO.	MOD. NO.	Cap. (Tons)	List	Sale
030545	804A	1	\$1,746.15	<b>\$1,259.95</b>
030547	806A	1	\$2,764.80	<b>\$1,995.00</b>
030549	808A	2	\$3,049.80	<b>\$2,095.00</b>

**Jack Safety Stands - Ratcheting Style**



- Heavy duty stands feature notched saddles to accept unitized body configuration
- Sold and shipped in pairs

PROD. NO.	MOD. NO.	Cap. (Tons)	List	Sale
032241	853A	3	\$87.25	<b>\$59.95</b>
032243	856A	6	\$130.95	<b>\$79.95</b>
032246	872B	12	\$362.40	<b>\$248.95</b>

## Air/Hydraulic Truck Axle Jacks - Super Heavy Duty



750SHD



- Super Heavy Duty, built tough for the rigors of the heavy duty trucking, agricultural and fleet business

PROD. NO.	MOD. NO.	Capacity	List	Sale
030475	750SHD	50 Ton (1st Stage) / 25 Ton (2nd Stage)	\$3,399.15	<b>\$2,335.00</b>
030476	760SHD	60 Ton (1st Stage) / 40 Ton (2nd Stage) / 20 Ton (3rd Stage)	\$4,068.80	<b>\$2,795.00</b>
030478	740SHD	40 ton (1st stage) / 20 ton (2nd stage)	\$2,910.00	<b>\$2,099.75</b>

## Transmission Jacks - Heavy Duty

- STRONGARM Hydraulic Telescopic Transmission Jacks provide service technicians one-man capabilities for installing transmissions, differentials or transfer case
- Telescopic two-stage hydraulics for greater lift range, precise load control and rapid lift
- Extendable height from 37" to 76 3/8"
- Convenient foot-operated pump allows mechanic to use both hands to position and align saddle with transmission (814BA and 816BA also includes air operated hand valve)
- Fully adjustable universal saddle with hand adjustable corner brackets and safety chain
- Wide base with four swivel caster wheels for easier, more efficient under-hoist positioning
- Safety overload system prevents jack from being used beyond the ASME/PASE load-limiting standard
- Meet ASME 2014



814B

PROD. NO.	MOD. NO.	Capacity (Tons)	List	Sale
030535	814B	0.5	\$1,299.00	<b>\$892.35</b>
030536	814BA (Air)	0.5	\$1,745.00	<b>\$1,198.70</b>
030537	816B	1	\$1,739.00	<b>\$1,194.60</b>
030538	816BA (Air)	1	\$1,890.00	<b>\$1,298.30</b>

## Air/Hydraulic Bottle Jacks



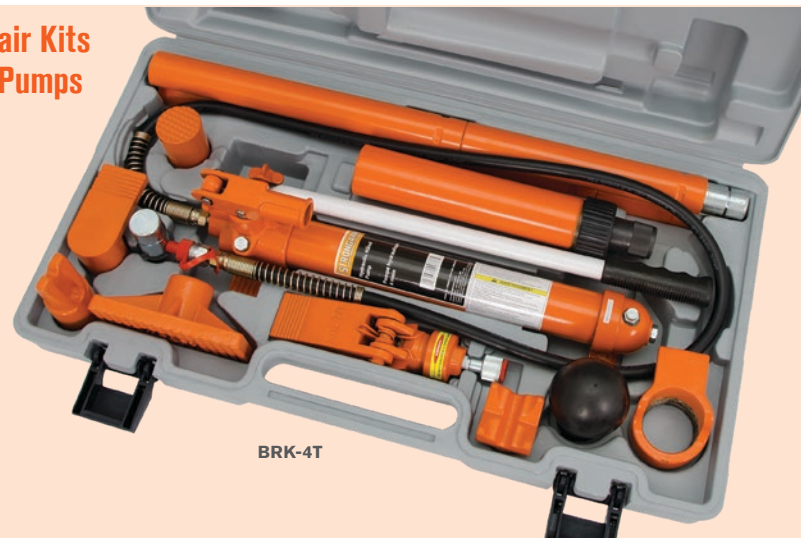
Super Thick 1-1/8" Steel Base

390SHD with welded tank and frame

- Factory pre-tested to 150% of rated capacity
- Heavy duty steel saddle for secure lifts
- Heat treated piston for maximum strength

PROD. NO.	MOD. NO.	Cap. (Tons)	List	Sale
030152	370C	12	\$422.10	<b>\$289.95</b> <b>Better</b>
030158	385SHD	20	\$436.65	<b>\$299.95</b> <b>Better</b>
<b>NEW</b> 030159	390SHD	20	\$543.00	<b>\$391.80</b> <b>Best</b>

## Body Repair Kits and Foot Pumps



BRK-4T

PROD. NO.	MOD. NO.	List	Sale
030202	BRK-4T	\$465.75	<b>\$319.95</b>
030207	BRK-10T	\$640.45	<b>\$439.95</b>
030212	401A	\$659.05	<b>\$475.55</b>
030215	402A	\$841.45	<b>\$607.15</b>



401A

