

SOWA[®]

METALWORKING SOLUTIONS



Canadians Supporting Canadians



Pricing valid from July 1 to September 30, 2019

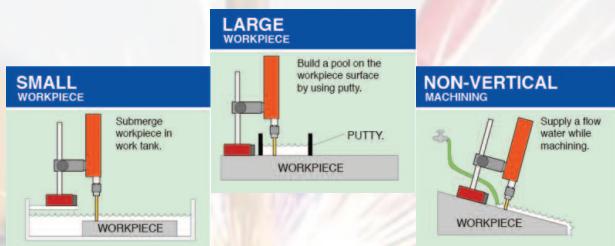
TR100 EDM BROKEN TAP REMOVER

2019 Summer Flyer



The Quick Solution To A Broken Tap
Fast, low cost, high performance

- Light, small, portable, compact design
- High speed & high efficiency
- Simple operation allows easy removal of broken tap
- **Dielectric:**
Uses ordinary tap water as the dielectric medium
- **Electrode:**
Uses any brass bar as electrode
- **ESA Approved**



LIMITED QUANTITIES



Code No.: 901-176

Contact us for a quote

Machinists' Chest - Model 526

KENNEDY

- 8 Drawer** – Felt lined drawers and tool compartment. Self storing drop front panel and rugged side handles
- 6 drawer dividers



Width (in.)	Depth (in.)	Height (in.)	Weight (lb)	Colour	Code No.	SALE \$
26-3/4"	8-1/2"	13-5/8"	36	Brown	609-602	599.36

Chest Bases - Models MC-22 & MC-28

KENNEDY

2 Drawer Chest Base MC-28 – Fits under model 526 and 52611 machinists' chests.

- Also fits any 27" or 29" roller cabinet
- Has wool felt lined top drawer and side handles



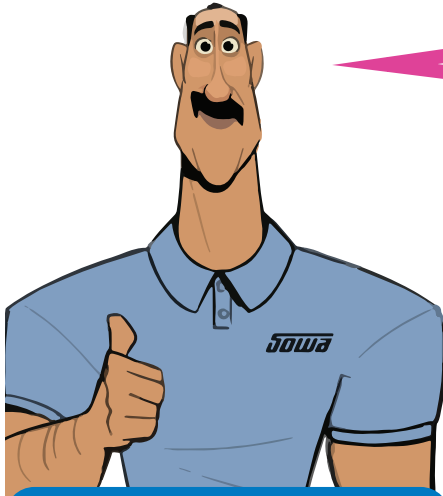
Width (in.)	Depth (in.)	Height (in.)	Weight (lb)	Colour	Code No.	SALE \$
28-1/8"	9-5/8"	7-13/16"	23	Brown	609-605	313.44

Head over to www.kennedymfg.com and grab yourself a copy of the Kennedy catalogue. Also check out their YouTube videos.



Distributed by:

WHY TOOL HOLDERS?



Hi, Hans here, Sowa Tool's Technical Specialist.

I read an article in *Modern Machine Shop* recently that I found very interesting and wanted to share.

It was an article on 7/24 taper tooling commonly found on BT, CAT, NMTB, and ISO tool holders. It turns out over 90% of all machining centers in the US use this taper.

Now, although it's easy to assume a taper is a taper, higher quality tool holders achieve the ideal 85-90% taper contact while lesser quality can range between 60-70%. Over time this creates micro-vibration resulting in "fretting" to the tool holder, spindle damage, premature cutting tool wear, and surface finish issues.

So we took it upon ourselves to test our GS holders vs. a cheaper competitor and the results were staggering.

Summary: Published taper to taper runout at 4xD of 0.0002" was actually 0.0025" on the competitor's holder. Whereas our GS holder was a true 0.0002"

Then we did a spin "balance" test. In this test their holder, that claimed to be G2.5 at 20,000rpm, had trouble reaching 11,000rpm. Our GS holder was G2.5 at 60,000rpm, this is 30,000rpm higher than we publish.



Competitor

* BEST BALANCE 2000 Ver. 2.3 *	
* * * * *	
* G.E.M.*****	

* Measured unbalance	
* Quantity	7.4 [gmm]
* Position	334.2 [deg]

* MAXIMUM SPEED ISO 1940	
* GRADE G1	4000
* GRADE G2.5	11000
* GRADE G6.3	28000
* GRADE G16	40000

* Weight	3.5 [Kg]

* Type	*****
* P/N	*****
* S/N	*****

* NOTE: *****	

* Operator	*****
* Date	*****

GS

* BEST BALANCE 2000 Ver. 2.3 *	
* * * * *	
* G.E.M.*****	

* Measured unbalance	
* Quantity	0.5 [gmm]
* Position	121.9 [deg]

* MAXIMUM SPEED ISO 1940	
* GRADE G1	67000
* GRADE G2.5	60000
* GRADE G6.3	60000
* GRADE G16	40000

* Weight	3.5 [Kg]

* Type	*****
* P/N	*****
* S/N	*****

* NOTE: *****	

* Operator	*****
* Date	*****

The Bottom Line - Why buy a cheap holder for that expensive machine spindle?

"Price Is What You Pay. Value Is What You Get."

GS STARTER PACKS

CAT TAPER STARTER PACKAGES



- CAT40 Certified Balanced to 30,000 RPM
- CAT50 Certified Balanced to 25,000 RPM
- 100% Forged Construction
- Precision Ground Throughout
- DIN Coolant Thru The Flange - Standard
- AT3 Taper Accuracy or better



CAT40 PACKAGE # 500-789

\$1,535.40

Code No.	Qty.	Description	
531002	1 pc.	CAT40 1/4 x 2.50"	End Mill Holder
531014	1 pc.	CAT40 3/8 x 2.50"	End Mill Holder
531026	1 pc.	CAT40 1/2 x 2.50"	End Mill Holder
531042	1 pc.	CAT40 3/4 x 3.00"	End Mill Holder
531056	1 pc.	CAT40 1" x 4.00"	End Mill Holder
531196	1 pc.	CAT40 1" x 1.75"	Shell Mill Holder
531421	2 pcs.	CAT40 ER32 x 2.5"	Collet Chucks
326-985	1 pc.	4 trays = 28 inserts	Trolley

CAT50 PACKAGE # 500-790

\$1,804.50

Code No.	Qty.	Description	
531120	1 pc.	CAT50 1/2 x 4.00"	End Mill Holder
531130	1 pc.	CAT50 5/8 x 4.00"	End Mill Holder
531140	1 pc.	CAT50 3/4 x 4.00"	End Mill Holder
531154	1 pc.	CAT50 1" x 4.00"	End Mill Holder
531162	1 pc.	CAT50 1-1/4 x 4.00"	End Mill Holder
531224	1 pc.	CAT50 1-1/4 x 1.75"	Shell Mill Holder
531454	2 pcs.	CAT50 ER32 x 4.00"	Collet Chucks
326-995	1 pc.	4 trays = 20 inserts	Trolley

ER16 COLLET CHUCK 4 PACKS



- CAT40 Certified Balanced to 30,000 RPM
- CAT50 Certified Balanced to 25,000 RPM
- 100% Forged Construction
- Precision Ground Throughout
- DIN Coolant Thru The Flange - Standard
- AT3 Taper Accuracy or better

CAT40 ER16 PACK # 500-324

\$697.32

Code No.	Qty.	Description	
531408	4 pcs.	CAT40 ER16 x 3.50"	Collet Chuck
337440	1 pc.	ER16 11pc	Collet Set

CAT50 ER16 PACK # 500-325

\$836.28

Code No.	Qty.	Description	
531432	4 pcs.	CAT50 ER16 x 4.12"	Collet Chuck
337440	1 pc.	ER16 11pc	Collet Set



CUTTING TOOLS

Carbide Jobber Drills



30% OFF

- 118° 4-facet point
- 20° helix angle
- Bright finish
- Sub-micrograin carbide

For use on:

- Aluminum
- Titanium Alloy
- Low & Medium Carbon Steel
- Copper
- High Carbon Steel
- Glass, Plastics, Composite Materials
- Cast Iron
- Alloys Steel



Size	Decimal Equivalent	Flute Length (in.)	Overall Length (in.)	Code No.	SALE \$
3/64"	0.0469	3/4"	1-1/2"	170-600	11.90
1/16"	0.0625	3/4"	1-1/2"	170-602	12.67
5/64"	0.0781	7/8"	1-3/4"	170-604	12.67
3/32"	0.0938	1"	2"	170-606	13.93
7/64"	0.1094	1-1/4"	2-1/4"	170-608	15.82
1/8"	0.1250	1-1/4"	2-1/4"	170-610	16.87
9/64"	0.1406	1-3/8"	2-1/2"	170-612	18.62
5/32"	0.1562	1-3/8"	2-1/2"	170-614	20.86
11/64"	0.1719	1-5/8"	2-3/4"	170-616	24.64
3/16"	0.1875	1-5/8"	2-3/4"	170-618	25.34
13/64"	0.2031	1-3/4"	3"	170-620	28.98
7/32"	0.2188	1-3/4"	3"	170-622	32.20
15/64"	0.2344	2"	3-1/4"	170-624	36.33
1/4"	0.2500	2"	3-1/4"	170-626	38.43
17/64"	0.2656	2-1/8"	3-1/2"	170-628	43.26
9/32"	0.2812	2-1/8"	3-1/2"	170-630	45.01
19/64"	0.2969	2-1/8"	3-1/2"	170-632	50.47
5/16"	0.3125	2-1/8"	3-1/2"	170-634	53.06
21/64"	0.3281	2-1/2"	4"	170-636	57.75
11/32"	0.3438	2-1/2"	4"	170-638	63.21
23/64"	0.3594	2-1/2"	4"	170-640	70.63
3/8"	0.3750	2-3/4"	4-1/4"	170-642	74.90
25/64"	0.3906	2-7/8"	4-1/2"	170-644	87.64
13/32"	0.4062	2-7/8"	4-1/2"	170-646	96.04
27/64"	0.4219	2-7/8"	4-1/2"	170-648	104.23
7/16"	0.4375	2-7/8"	4-1/2"	170-650	109.27
29/64"	0.4531	3"	4-3/4"	170-652	126.49
15/32"	0.4688	3"	4-3/4"	170-654	131.81
31/64"	0.4844	3"	4-3/4"	170-656	135.59
1/2"	0.5000	3"	4-3/4"	170-658	135.59

HSS & Cobalt 3 Flute Countersinks



EUROPEAN MADE



82° COBALT 3 FLUTE COUNTERSINKS

- M35 Cobalt
- Wide flutes provide good chip evacuation
- Positive cut
- Constant profile aids regrinding of the tool
- Self-centering of the cutting mill (three bearing points) virtually eliminates vibration

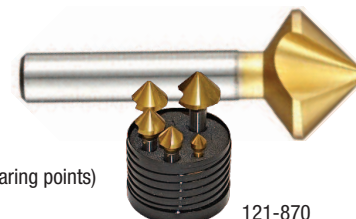


121-860

Diameter	O.A.L.	Shank Diameter	Code No.	SALE \$
INCH				
1/4"	45mm	1/4"	121-875	20.51
5/16"	45mm	1/4"	121-876	23.66
3/8"	50mm	1/4"	121-877	26.88
1/2"	50mm	1/4"	121-878	33.32
5/8"	60mm	3/8"	121-879	38.64
3/4"	60mm	3/8"	121-880	45.08
1"	70mm	3/8"	121-881	54.74
7pc Set				242.13
METRIC				
6.3mm	45mm	5mm	121-868	23.66
10.4mm	50mm	6mm	121-869	31.78
16.5mm	61mm	10mm	121-872	44.66
20.5mm	64mm	10mm	121-873	52.57
25.0mm	68mm	10mm	121-874	63.98
5pc Set				214.34

82° COBALT 3 FLUTE COUNTERSINKS - TIN COATED

- M35 Cobalt
- Wide flutes provide good chip evacuation
- Positive cut
- Constant profile aids regrinding of the tool
- Self-centering of the cutting mill (three bearing points) virtually eliminates vibration



121-870

5pc Variable Helix Carbide End Mill Set



- 4 Flute
- Small corner radius for added strength and smoother cutting action
- AlTiN coated for improved tool life and increased production output



Set Includes:

Cutting Dia. (in.)	With Radius Code No.	List \$
3/16"	153-002	30.90
1/4"	153-006	42.30
5/16"	153-012	58.90
3/8"	153-018	66.50
1/2"	153-027	119.70

CODE:

153-005

\$150.00

List: \$318.30

Diameter	O.A.L.	Shank Diameter	Code No.	SALE \$
10.4mm	50mm	6mm	121-882	38.64
16.5mm	61mm	10mm	121-883	55.86
20.5mm	64mm	10mm	121-884	64.33
25.0mm	68mm	10mm	121-885	76.79
31.0mm	73mm	12mm	121-886	109.41
5pc Set				332.15



PRECISION TOOLS

Quick Set / True Test Indicator

Mitutoyo

Complete Model Includes:

- All basic accessories
- .039 and .118 contact points
- Swivel clamp for 5/32" and 3/8" dove tail
- 5/32" dove tail arm



Mitutoyo Model No.	Range (in.)	Grad (in.)	Sowa Code No.	SALE \$
Complete Model 513-403T	0.008"	0.0001"	840-216	202.30

Dial Caliper

Mitutoyo

- Extra rigid (3-4mm thick) main beam
- Extra large dial face
- Hardened stainless steel
- 4-way measurements
- Easy-read point re-adjustment with adjuster supplies



Mitutoyo Model No.	Range (in.)	Per Rev (in.)	Sowa Code No.	SALE \$
505-743	0 - 8"	0.100"	850-028	189.55

Outside Micrometer Set

Mitutoyo

- Carbide faces
- Positive locking clamp
- Ratchet stop for exact repetitive readings
- Baked enamel finished frame
- Clear graduations on satin chrome finish



Mitutoyo Model No.	Range (in.)	Grad. (in.)	Sowa Code No.	SALE \$
103-907-40	0 - 6"	0.0001"	848-080	807.50

Dial Test Indicator Sets

ASIMETO

- Graduation: 0.0005"
- Jeweled bearings
- Comes with Ø3/8" dovetail stems
- Easy to read yellow face
- Carbide tipped contact point
- 1.26" dia. dial face



Range	Accuracy	Dial Reading	Type	Code No.	SALE \$
0.03"	±0.0005"	0-15-0	Horizontal	7501733	66.24
Full Set 0.03"	±0.0005"	0-15-0	Horizontal	7501738	83.70

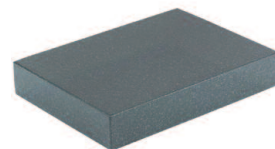
1-800-265-8221

Black Granite Surface Plates O-Ledge



Imported Precision Toolroom Black Granite Surface Plates

These plates are made of the highest quality – True Black – Fine Grained – Non-porous – Jewel Hardness – Granite available to give years of long lasting service.



Specifications:

Compressive Strength 7329 lbs. / in²
Water Absorptivity 0.13%

Size (in.)	Thickness (in.)	Shipping Weight (lb)	(±)	Code No.	SALE \$
Grade B-Tool Room- No Ledge					
18 x 24"	4"	189	0.00015	255-110	298.27
24 x 36"	4"	475	0.0002	255-115	497.91
Grade A-Inspection					
24 x 36"	4"	475	0.0001	255-140	454.93

Surface Plate Cleaner

ASIMETO

Features:

- An exclusive formulation that is extremely effective for the cleaning and care of granite surface plates
- Works quickly and effectively, leaves no residue on the granite.

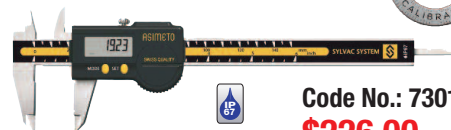


Description	Code No.	SALE \$
Pint Spray Bottle	7607520	8.33
Quart	7607530	12.88
1/2" Gallon	7607540	21.21
Gallon	7607550	28.98

6" IP67 Coolant Proof Sylvac Digital Caliper

ASIMETO

- Range: 0-6"/150mm
- Accuracy: ±0.001"/0.02mm
- Resolution: 0.0005"/0.01mm
- Inch/Metric conversion
- Auto power On/Off
- Sylvac system
- Conforms to the IP67 ratings



Code No.: 7301060
\$226.00



Full Set



Base Set



www.sowatool.com

BISON 2405-K POWER CHUCKS



BISON 2405-K POWER CHUCKS WITH 1.5MM X 60° SERRATIONS

Features:

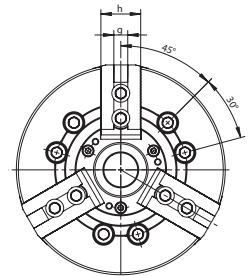
- Manufactured from high grade alloy steel which extends machine life while providing higher rigidity and greater wear resistance
- The unique design of wedge nut results in its very rigid structure and enables direct power transmission to the master jaws in direct area of jaw guideways – effectively counteracting the loss of gripping force and resulting in high power transmission efficiency
- Hardened and ground working surfaces ensure longer life with maintained accuracy and repeatability
- Large through-hole works well with high rotational speeds
- Master jaws secured against throw-off
- Master jaws lubricated directly
- Unbalance G 6.3
- Flat back mounting, dimensions according to DIN 6353

Application:

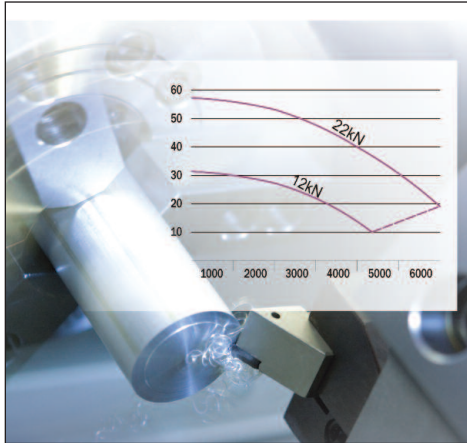
- This first class chuck, with increased gripping accuracy, is made for very high precision machining on CNC lathes and turning centers
- Designed for high rotation speeds without compensating elements

Standard accessories:

- Chuck and jaw mounting bolts
- Reversible top jaws hardened and ground
- T-nuts
- Blank Draw Bar Nut
- Key for chuck installation
- Eye bolt (for sizes greater than 8"/200 mm)



Chuck Dia.	Thru Hole Dia.	Max RPM	Max Gripping Force	Weight	Code No.	SALE \$
8"	52mm	5000	3400 daN	22kg	468-116	3,660.75
10"	75mm	4200	4300 daN	35kg	468-124	5,310.18



ADAPTERS FOR 2405-K POWER CHUCKS



Chuck Dia.	Mount	Plate Dia.	Weight	Code No.	SALE \$
8"	A-6	170mm	2.3kg	468-956	712.08
10"	A-6	220mm	5.2kg	468-958	912.51
10"	A-8	220mm	4.2kg	468-960	886.23

**FOR MORE INFORMATION ON SPECS PLEASE CONTACT OUR ORDER DESK
PHONE: 1-800-265-8221**



**We Have The Largest
Bison Brand Lathe Chuck
Inventory In Canada!
Imported Directly From Poland!**

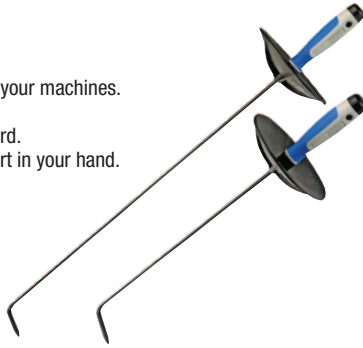


SHOP SUPPLIES

Chip Hooks - SP2500 & SP2550



For removing chips and clean the chip trays on your machines.
Black finished steel hooks.
The Chip Hooks include a plastic protective guard.
NogaGrip Handle designed for maximum comfort in your hand.



Model	Length	Code No.	SALE \$
SP2500	400mm	165-488	31.45
SP2550	600mm	165-490	35.53

Noga The Set - SP7700



The most popular deburring tools you need to carry for any deburring application. Packed in one handy box.

• Contains:
Countersink NG3100, Mini Scraper NG3700, Noga V Cut NG3200, Adjustable Scraper SC8000, Keyway-Burr NG3300, Internal Scraper NG3710, Super Burr NG3003



Model	Code No.	SALE \$
SP7700	165-482	177.99

1/4" 90° Die Grinder Kit (with Throttle Lever)



Contains:

- 1 pc. TP-1014 Grinder
- 1 pc. 1/8" (3 mm) collet
- 1 pc. 1/4" (6 mm) collet
- 2 pcs. spanners
- 5 pcs. 1/4" (6 mm) shank grinding
- 5 pcs. 1/8" (3 mm) shank grinding
- 25,000 RPM



Description	Code No.	SALE \$
1/4" 90° die grinder kit	174-006	115.85

1/4" Die Grinder - TP-9001



Specifications

- Air Inlet (N.P.T.): 1/4"
- Air Consumption (Loading): 13 cfm
- Exhaust System: Rear
- Aluminum Alloy Housing



Horse Power	RPM	Collet Size	Air Pressure (psi)	O.A.L. (in.)	Net Weight (lb)	Code No.	SALE \$
0.9	18,000	1/4"(6mm)	90	7-5/16"	1.56	174-052	151.97

Magnetic V-Block



Used to hold cylindrical workpieces for grinding. Will hold both itself and the work on any flat ferrous surface, including a permanent magnet chuck (without energizing the chuck.)

There are two vees:

- The smaller for workpieces up to .750" diameter and the larger for workpieces up to 2.500" diameter



Description	Code No.	SALE \$
Magnetic V-Blocks	225-710	108.50

5" Extended H.D. Die Grinder - TP-1104



Specifications

- Air Inlet (N.P.T.): 1/4"
- Air Consumption (Loading): 13 cfm
- Exhaust System: Rear
- Aluminum Alloy Housing



Horse Power	RPM	Collet Size	Air Pressure (psi)	O.A.L. (in.)	Net Weight (lb)	Code No.	SALE \$
0.3	25,000	1/4"(6mm)	90	11-1/4"	1.45	174-032	176.89

Hand Soap



Cleans, Moisturizes and Re-Conditions Dry Skin for Frequent Hand Washers

- 100% Biodegradable
- No Plastic Pumice
- Apple Seed Pumice for a Safer Environment
- No Solvent or Petroleum Distillate that dry and crack skin
- Leaves Hands Soft & Clean
- A Green Product That Really Works!



- ENVIRONMENTALLY FRIENDLY
- MICROBEAD FREE
- PETROLEUM FREE

Code No.: 907-719

\$ 25.88

Proudly Made in Canada

TOOL & WORK HOLDING

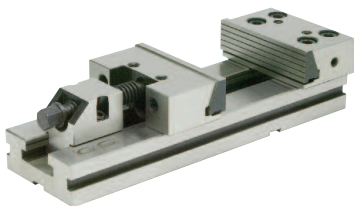


MODULAR VISE + PARALLEL SET



Features/Benefits:

- High accuracy
- Unlimited clamping range
- High quality alloy steel
- High clamping pressure
- No jaw lift
- All vises are matched
- Jaw Width: 6"
- Opening: 8"
- Jaw Height: 2"



382-015
List: \$1206.10



230-863
List: \$133.40

- Thin style, 1/8" thick
- Matched pairs
- Made of high grade steel alloy
- Hardened and ground
- Tolerance ± 0.0003 "
- Length: 6"
- Height:
1/2, 5/8, 3/4, 7/8, 1,
1-1/8, 1-1/4, 1-3/8,
1-1/2, 1-5/8

Code No.: 500-341

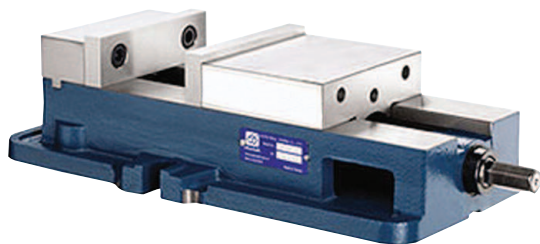
\$1,173.00

Precision Milling Machine Vise

Jaw Plate Positions

Lock-Well vises have these quality features:

- Vises are matched (bed height: 3.310")
- 4 Jaw Plate positions allowing extra capacity with the jaw plates in the outside position
- The other quality movable jaw does not lift off the bed, and deflection of the stationary bed is minimized
- The lead screw is enclosed for maximum protection



8" X 10" Opening: \$1,578.00 - Code # 327-130

Super Precision Keyless Drill Chucks



Keyless chucks are engineered to quickly loosen and tighten a tool on the chuck collar of the drill, either by manual operation or when torque is applied. Rotating the chuck collar in a counterclockwise direction will loosen the tool.

- High precision, premium tolerance
- The jaws feature a TIN coated surface treatment to assure durability.



Chuck Model	Capacity (in.)	Mount	Code No.	SALE \$
13XH	1/64-1/2"	JT6	536-534	130.76
16XH	1/8-5/8"	JT6	536-540	143.36

Plain Bearing Drill Chuck



- Sleeve design eliminates the possibility of tooth breakage
- Hardened jaws and body help to avoid wear and lengthen the life of the chuck



Chuck Model	Capacity (in.)	Mount	Code No.	SALE \$
10GH	1/64-3/8"	JT2	536-512	23.03

25LB BAG OF COLOURED COTTON WIPING RAGS

- Coloured fleece
- Disposable cloth wiping rags



Code # 891-527

\$23.76

Pricing valid from July 1 to September 30, 2019 or while quantities last.

We reserve the right to make changes without notice and accept no liabilities for mistakes and printing errors. All taxes extra.



Sowa Tool & Machine Co. Ltd.
500 Manitou Drive
Kitchener, Ontario
N2C 1L3

Western Canada Branch
9649-49th Ave
Edmonton, AB
T6E 5Z5

Toll Free: 1-800-265-8221
Phone: (519) 748-5750
Fax: (519) 748-9304
sales@sowatool.com
www.sowatool.com



★ C A D I S 4 6 ★

Printed in Canada