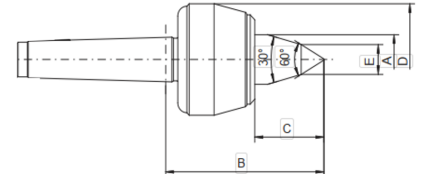




- Extended 60° Point
- High-Precision Triple Bearing
- New Reliable Seal Technology
- High Runout Accuracy & Speeds
- Heavy Duty with Long Life

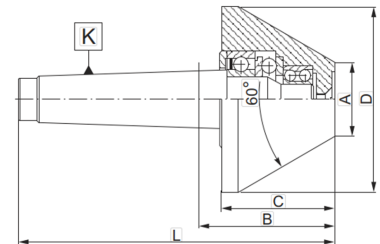


8814 R - PREMIUM EXTENDED 60° POINT LIVE CENTER

Part #	Bison #	Morse Taper	T.I.R. (in)	Max Load (lbs)	Max RPM	A (in)	C (in)	D (in)	E (in)	Sale Price
HK30560002	7-560-002	2	+/- .0002	308	7000	.79	1.32	1.77	.39	\$ 323.65
HK30560003	7-560-003	3	+/- .0002	880	5000	.98	1.71	2.36	.47	\$ 415.63
HK30560004	7-560-004	4	+/- .0002	1100	3800	1.26	2.05	2.76	.55	\$ 654.11
HK30560005	7-560-005	5	+/- .0002	2640	3000	1.57	2.57	3.54	.63	\$ 834.67
HK30560006	7-560-006	6	+/- .0004	5500	2600	1.97	3.05	4.13	.71	\$ 1,385.44



- High-Precision Triple Bearing
- Three Matched Bearings- Preloaded at Factory
- Good Thrust & Radial Capabilities
- Heavy Duty with Long Life
- New Special Seal Technology
- Head is Made of Alloy Steel Rc 61-63
- 60° Point Angle
- Designed to hold Pipe and Hollow Work



8825 - BULL HEAD 60° LIVE CENTER

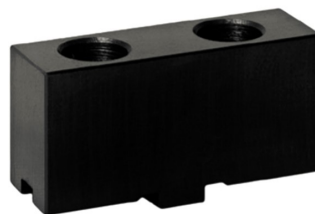
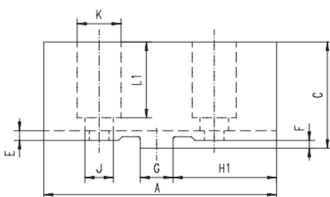
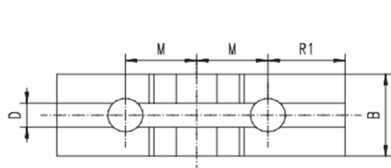
Part #	Bison #	Morse Taper	A (in)	D (in)	T.I.R. (in)	Max Work-piece (lbs)	Max RPM	Sale Price
HK30575010	7-575-010	1	.79	1.97	.0003	220	5000	\$ 160.12
HK30575020	7-575-020	2	1.18	2.36	.0003	400	5000	\$ 188.51
HK30575021	7-575-021	2	1.18	3.15	.0003	660	4500	\$ 290.71
HK30575030	7-575-030	3	1.18	3.15	.0003	770	4500	\$ 295.26
HK30575031	7-575-031	3	1.57	3.93	.0003	1210	3000	\$ 415.63
HK30575040	7-575-040	4	1.57	3.93	.0003	1320	3000	\$ 398.60
HK30575042	7-575-042	4	2.76	5.51	.0004	1540	3000	\$ 458.78
HK30575051	7-575-051	5	3.94	6.69	.0008	1653	2000	\$ 574.62



3205 / 15 / 45 SEMI-STEEL 3-JAW LATHE CHUCK - 2 PC JAWS

Chuck Size	Plain Back Part #	Sale Price	'A' Mount Part #	Spindle Mount	Sale Price	'D' Mount Part #	Spindle Mount	Sale Price
5"	HK308000500	\$ 903.30				HK308030534	D1-4	\$ 1,832.87
6"	HK308000600	\$ 960.80	HK308010615	A1-5	\$ 1,302.54	HK308030633	D1-3	\$ 1,141.28
						HK308030634	D1-4	\$ 1,141.28
8"	HK308000800	\$ 1,172.00	HK308010815	A1-5	\$ 2,297.33	HK308030833	D1-3	\$ 1,458.12
						HK308030834	D1-4	\$ 1,458.12
						HK308030835	D1-5	\$ 1,458.12
			HK308010816	A1-6	\$ 2,297.33	HK308030836	D1-6	\$ 1,458.12
10"	HK308001000	\$ 1,525.12	HK308011015*	A2-5	\$ 2,434.74	HK308031035*	D1-5	\$ 1,975.96
						HK308031036*	D1-6	\$ 1,975.96
						HK308031038*	D1-8	\$ 1,975.96

*chucks over 50 lbs may be subject to extra courier charges



AMERICAN STANDARD T&G SOFT TOP JAWS - 3 JAW

Part #	Bison #	Chuck Size	A (in)	B (in)	C (in)	D (in)	E (in)	F (in)	G (in)	H1 (in)	J (in)	K (in)	L1 (in)	M (in)	Sale Price
HD57050	7-884-305	5"	2.52	.87	1.83	.31	.16	.13	.50	.98	.35	.59	.59	1.02	\$ 57.06
HD57060	7-884-306	6"	3.07	.98	1.63	.31	.16	.13	.50	1.34	.43	.71	1.14	.75	\$ 62.13
HD57080	7-884-308	8"	3.54	1.06	1.71	.31	.16	.13	.50	1.57	.43	.71	1.22	.88	\$ 65.86
HD57100	7-884-310	10"	4.17	1.28	2.03	.50	.16	.13	.75	1.77	.55	.79	1.50	1.06	\$ 90.02
HD57120	7-884-312	12"	4.72	1.46	2.17	.50	.16	.13	.75	2.09	.55	.79	1.57	1.25	\$ 88.58
HD57150	7-884-316	16"	5.51	1.65	2.54	.50	.16	.25	.75	2.48	.71	1.02	1.79	1.50	\$ 139.47
HK327884320	7-884-320	20"	5.51	1.65	2.93	.50	.16	.25	.75	2.48	.87	1.3	2.20	1.50	\$ 162.39
HK30884325	7-884-325	25 / 32"	6.30	2.05	3.23	.50	.16	.25	.75	2.48	.87	1.3	2.52	1.50	\$ 223.72